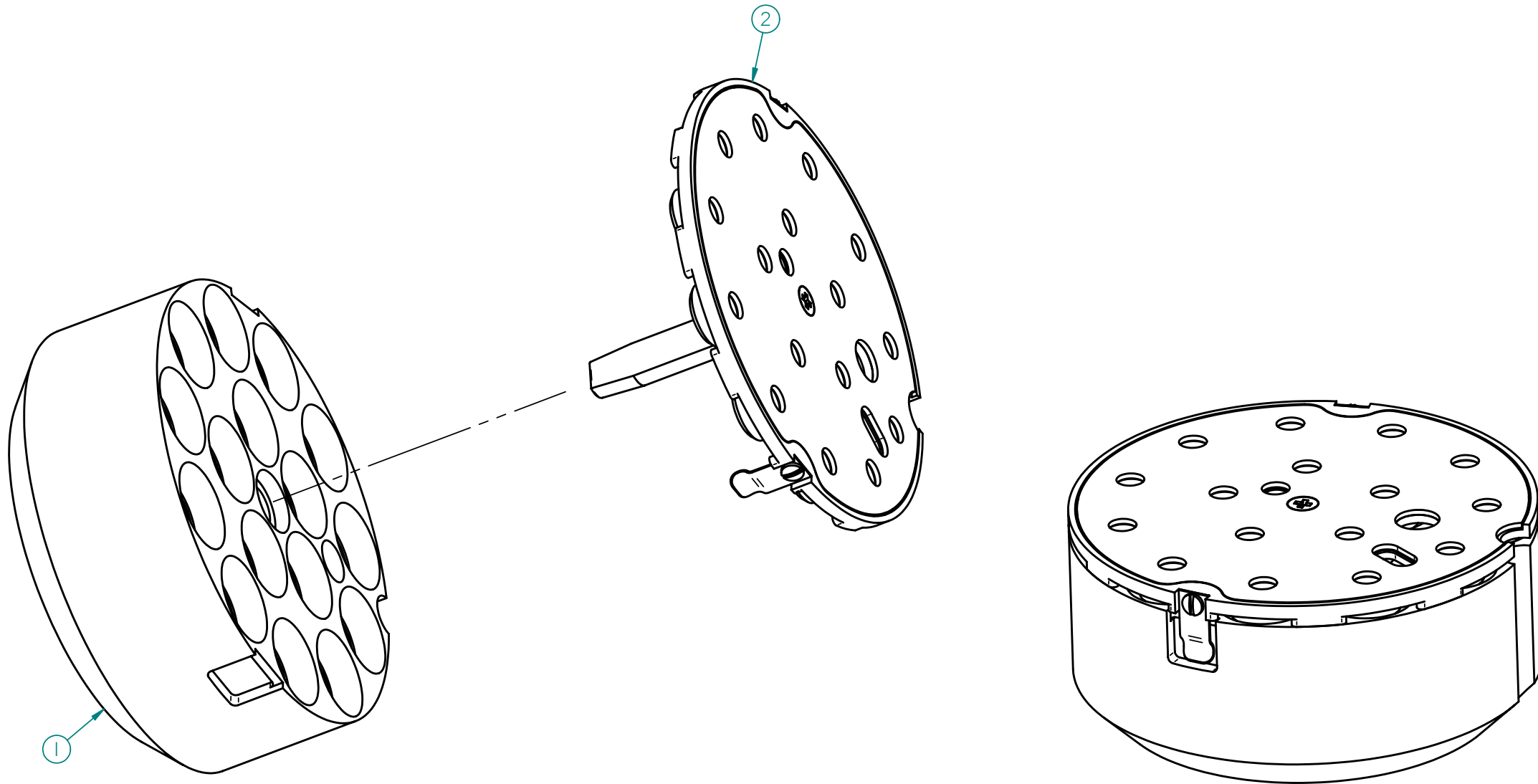


NOTE:

1. CHECK THE ORIENTATION OF EACH MAGNET IN THE BASE PLATE ASSEMBLY (ITEM 2) TO ASSURE THAT IT MATCH WITH THE MAGNETS OF ENCLOSURE ASSEMBLY (ITEM 1) SO THAT THEY ATTRACT EACH OTHER.
2. CHECK THE SERIAL NUMBERS OF THE BASE PLATE ASSEMBLY (ITEM 2) AND THE ENCLOSURE ASSEMBLY (ITEM 1) TO ASSURE THAT THEY MATCH.
3. ATTACHED THE BAGGED BASE PLATE SHORT CLIPS TO THE UNIVERSAL PUCK ASSEMBLY FOR SHIPPING.

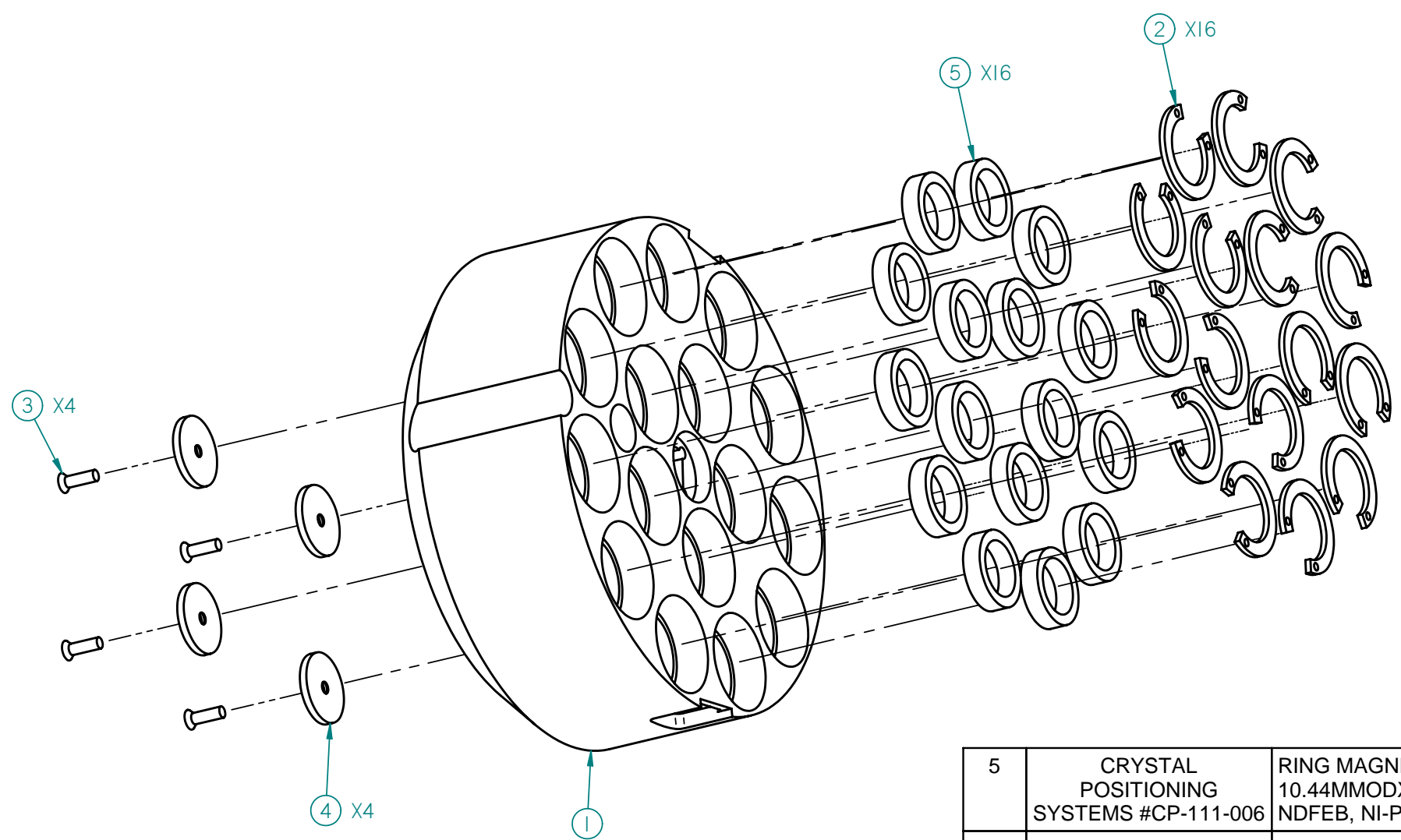


REV	DESCRIPTION	DWN	CHKR	APVD	DATE

ITEM	STOCK OR PART NO	TITLE OR DESCRIPTION	QTY
2		BASE PLATE ASSEMBLY	1
1		ENCLOSURE ASSEMBLY	1

---	DIMENSIONING AND TOLERANCING IS IN ACCORDANCE WITH ASME Y14.5M-1994.	SCALE: 2:1	DO NOT SCALE DRAWING	CAD FILE NAME:
---	UNLESS OTHERWISE SPECIFIED DIMENSIONS ARE IN MM.	STANFORD SYNCHROTRON RADIATION LABORATORY U.S. DEPARTMENT OF ENERGY SLAC, STANFORD UNIVERSITY STANFORD, CALIFORNIA		
---	TOLERANCES: BREAK EDGES .125-.400 INTERNAL CORNERS R.400 MAX	PROPRIETARY DATA OF STANFORD UNIVERSITY AND/OR U. S. DEPARTMENT OF ENERGY. RECIPIENT SHALL NOT PUBLISH THE INFORMATION WITHIN UNLESS GRANTED SPECIFIC PERMISSION OF STANFORD UNIVERSITY.		
---	FRACTIONS ± --- DEC .xx ± .10 .xxx ± .050 .xxxx ± --- ANGLE ± ---	ENGR _____ DWN _____ CHKR _____	DATE _____ APPROVALS _____ _____ _____	UNIVERSAL V1-PUCK ASSEMBLY --- --- DRAWING NUMBER ---
NEXT ASSEMBLIES:	1.6 ALL SURF ✓	REVISION NUMBER 0		C

NOTE:
 1. HOUSING (ITEM 1) SHALL BE HARD ANODIZED BEFORE SENDING FOR LASER ENGRAVING. AFTER LASER ENGRAVING, ASSEMBLE HOUSING WITH OTHER PARTS (ITEMS 2-5).



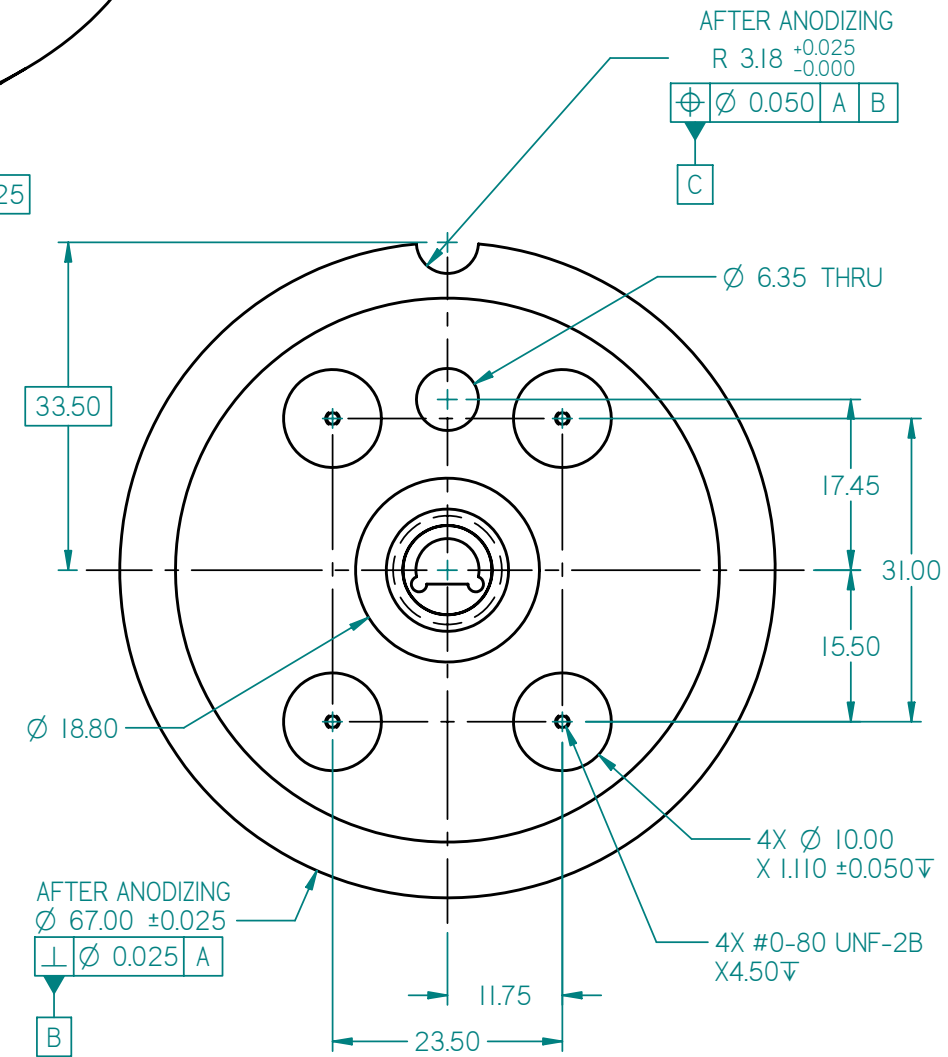
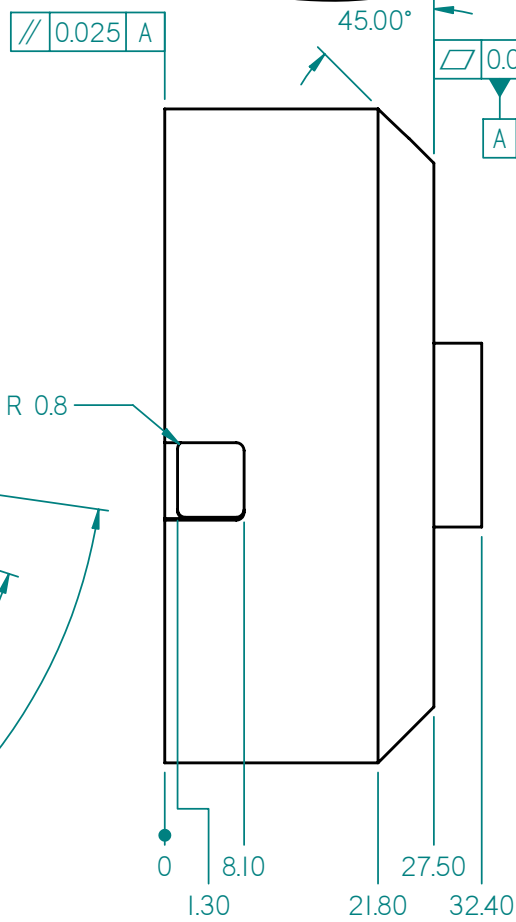
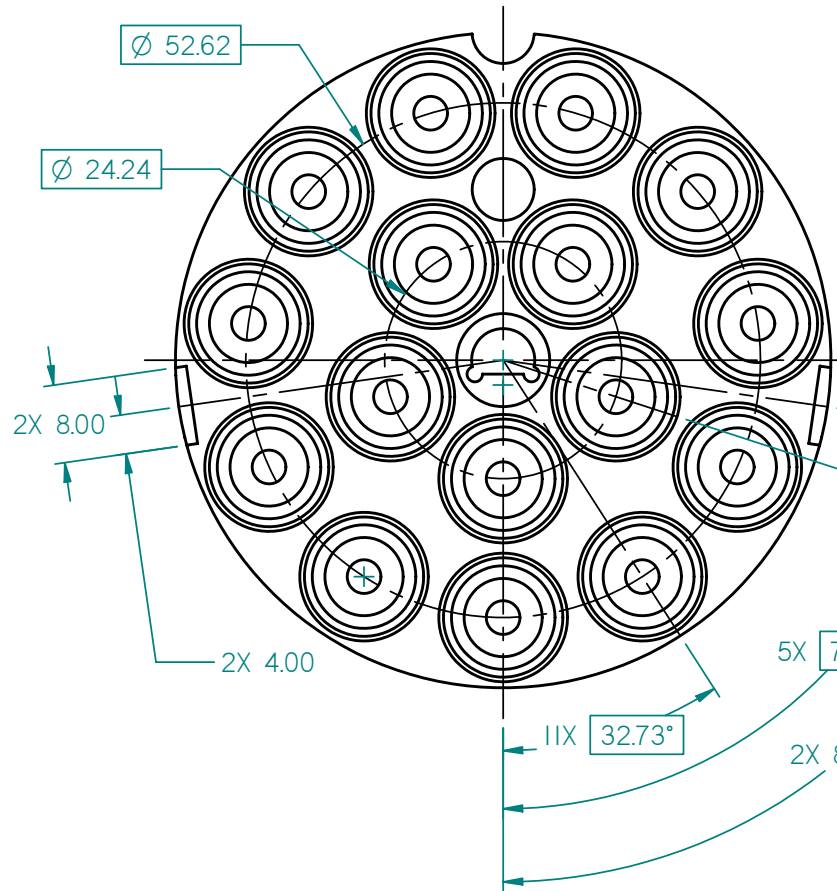
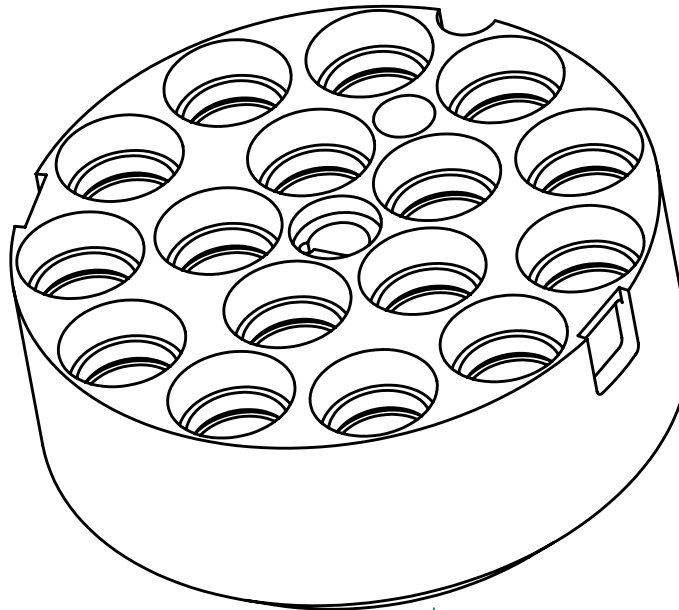
5	CRYSTAL POSITIONING SYSTEMS #CP-111-006	RING MAGNET 10.44MMODX7.56MMIDX2.54MMT, N30, NDFEB, NI-PLATED	16
4		ENCLOSURE DISK PLATE	4
3	MCMaster-CARR #91771A054	#0-80 X 3/16 PHILIPS FLAT HEAD SCREW, STAINLESS STEEL	4
2	CRYSTAL POSITIONING SYSTEMS #CP-111-007	POLYCARBONATE WASHER	16
1		ENCLOSURE HOUSING	1
ITEM	STOCK OR PART NO	TITLE OR DESCRIPTION	QTY

---	DIMENSIONING AND TOLERANCING IS IN ACCORDANCE WITH ASME Y14.5M-1994.	SCALE: 2:1	DO NOT SCALE DRAWING	CAD FILE NAME:
---	UNLESS OTHERWISE SPECIFIED DIMENSIONS ARE IN MM. TOLERANCES: BREAK EDGES .125-.400 INTERNAL CORNERS R.400 MAX FRACTIONS ± --- DEC .xx ± .10 .xxx ± .050 .xxxx ± --- ANGLE ± .25		STANFORD SYNCHROTRON RADIATION LABORATORY U.S. DEPARTMENT OF ENERGY SLAC, STANFORD UNIVERSITY STANFORD, CALIFORNIA	
---	NEXT ASSEMBLIES:	PROPRIETARY DATA OF STANFORD UNIVERSITY AND/OR U. S. DEPARTMENT OF ENERGY. RECIPIENT SHALL NOT PUBLISH THE INFORMATION WITHIN UNLESS GRANTED SPECIFIC PERMISSION OF STANFORD UNIVERSITY.	UNIVERSAL V1-PUCK ENCLOSURE ASSEMBLY --- ---	
---		ENGR _____ DATE _____ DWN _____ CHKR _____	APPROVALS --- --- ---	DRAWING NUMBER: --- REVISION NUMBER: 0 C

NOTE:

1. MATERIAL: ALUMINUM 7075-T651.
2. SOME HIDDEN LINES LEFT OUT FOR CLARITY.
3. INTERNAL CORNERS: R 0.13 MAX.
4. BREAK EXPOSED SHARP EDGES: 0.13 MIN, 0.26 MAX.
5. PART IS TO BE HARD ANODIZED (0.05 THICK). MASK TAPPED HOLE AND CENTER CUT-OUT AS SHOWN IN DETAIL D BEFORE ANODIZING.

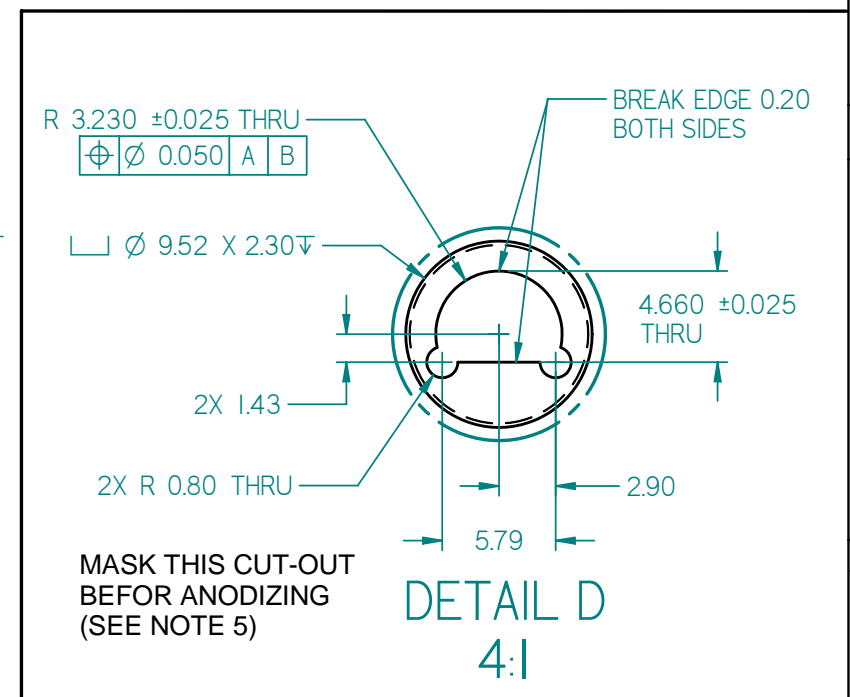
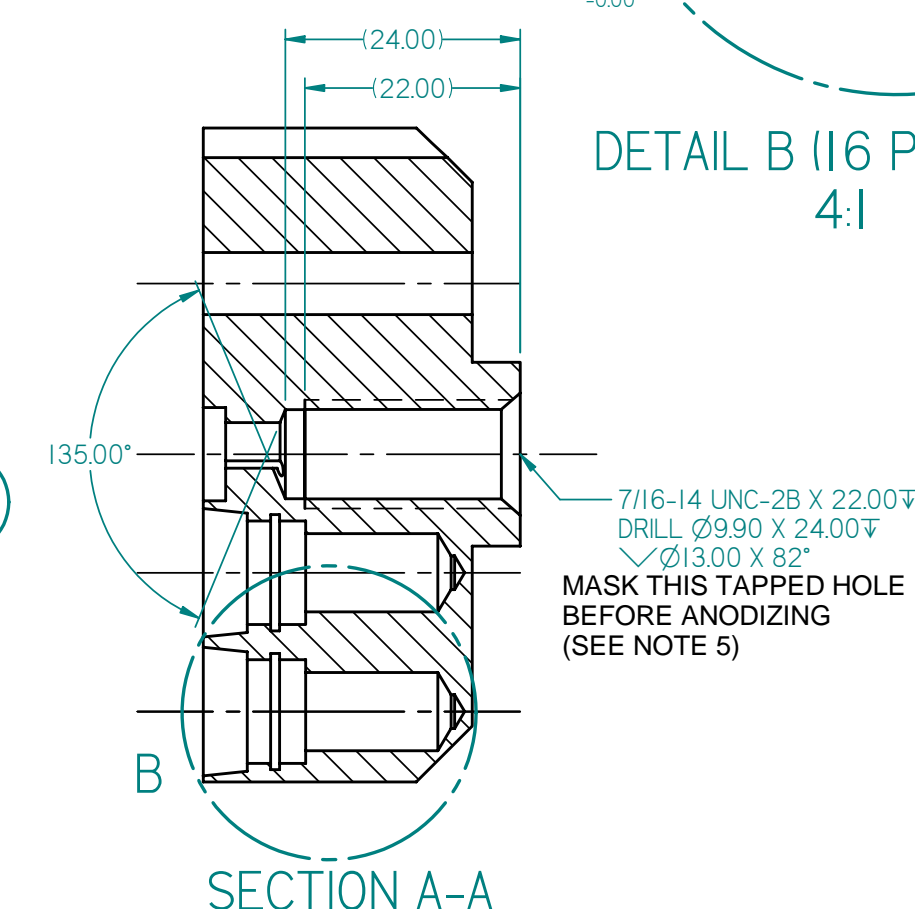
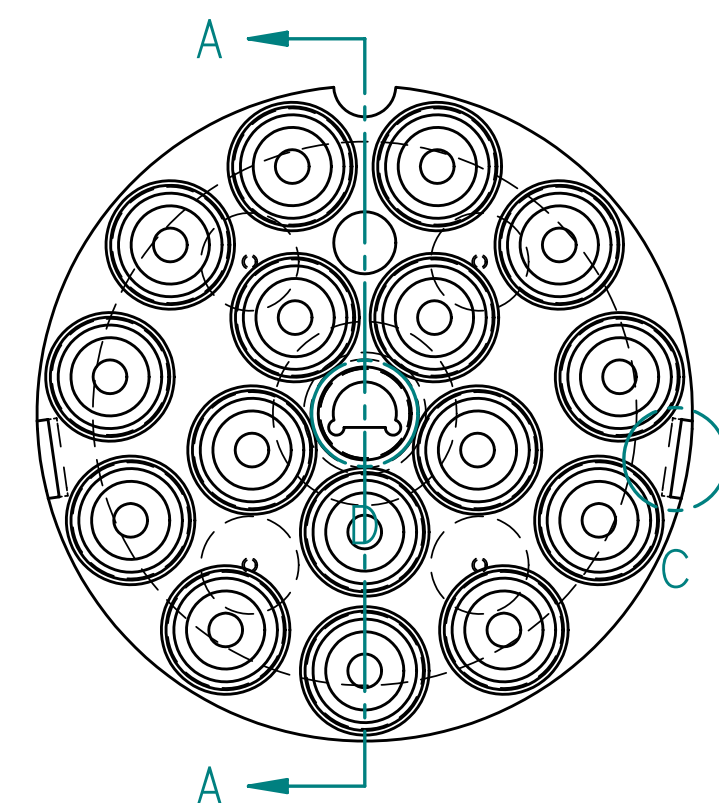
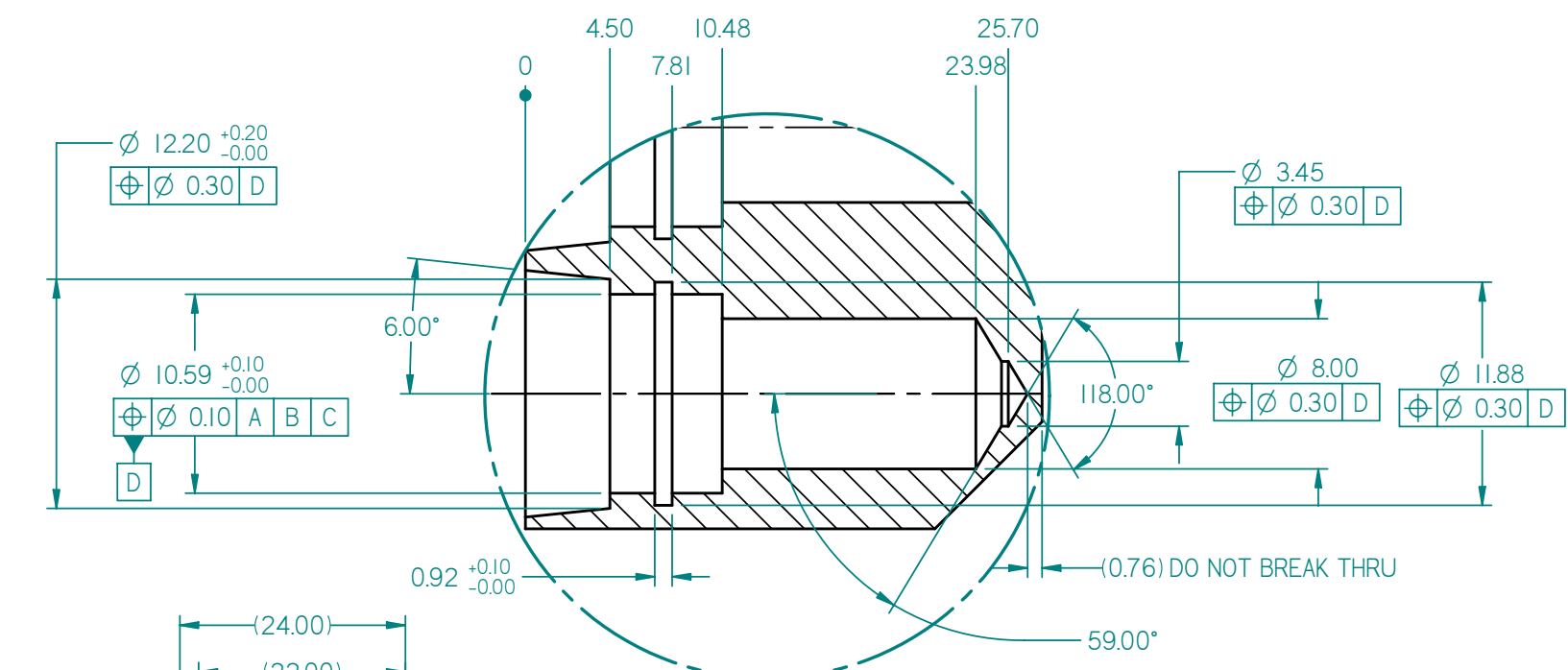
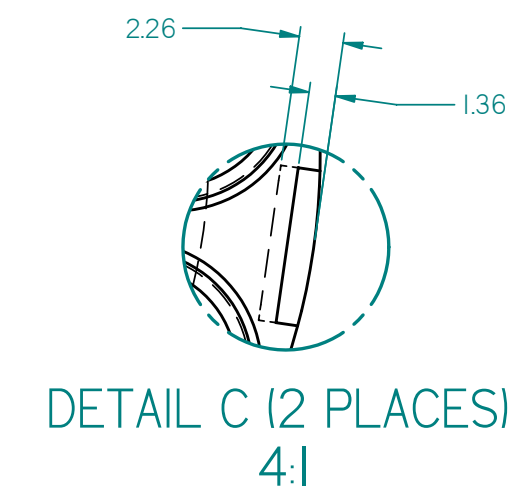
REV	DESCRIPTION	DWN	CHKR	APVD	DATE



---	DIMENSIONING AND TOLERANCING IS IN ACCORDANCE WITH ASME Y14.5M-1994.	SCALE: 2:1	DO NOT SCALE DRAWING	CAD FILE NAME:
---	UNLESS OTHERWISE SPECIFIED DIMENSIONS ARE IN MM.	STANFORD SYNCHROTRON RADIATION LABORATORY U.S. DEPARTMENT OF ENERGY SLAC, STANFORD UNIVERSITY STANFORD, CALIFORNIA		UNIVERSAL V1-PUCK ENCLOSURE HOUSING P 1 OF 2
---	TOLERANCES: BREAK EDGES .125-.400 INTERNAL CORNERS R.400 MAX FRACTIONS ± --- DEC .xx ± .10 .xxx ± .050 .xxxx ± --- ANGLE ± .25°	PROPRIETARY DATA OF STANFORD UNIVERSITY AND/OR U. S. DEPARTMENT OF ENERGY. RECIPIENT SHALL NOT PUBLISH THE INFORMATION WITHIN UNLESS GRANTED SPECIFIC PERMISSION OF STANFORD UNIVERSITY.		
---	NEXT ASSEMBLIES:	APPROVALS	DRAWING NUMBER	REVISION NUMBER
---		---	---	0
---		---	---	C

REV	DESCRIPTION	DWN	CHKR	APVD	DATE

D
C
B
A



---	DIMENSIONING AND TOLERANCING IS IN ACCORDANCE WITH ASME Y14.5M-1994.	SCALE: 2:1	DO NOT SCALE DRAWING	CAD FILE NAME:
---	UNLESS OTHERWISE SPECIFIED DIMENSIONS ARE IN MM.	STANFORD SYNCHROTRON RADIATION LABORATORY U.S. DEPARTMENT OF ENERGY SLAC, STANFORD UNIVERSITY STANFORD, CALIFORNIA		UNIVERSAL V1-PUCK ENCLOSURE HOUSING P 2 OF 2 (DETAIL)
---	TOLERANCES: BREAK EDGES .125-.400 INTERNAL CORNERS R.400 MAX FRACTIONS ± --- DEC .xx ± .10 .xxx ± .050 .xxxx ± --- ANGLE ± .25° ALL SURF ✓ 1.6	PROPRIETARY DATA OF STANFORD UNIVERSITY AND/OR U. S. DEPARTMENT OF ENERGY. RECIPIENT SHALL NOT PUBLISH THE INFORMATION WITHIN UNLESS GRANTED SPECIFIC PERMISSION OF STANFORD UNIVERSITY.		
---	NEXT ASSEMBLIES:	APPROVALS	DRAWING NUMBER	REVISION NUMBER
---	---	---	---	0 C

D
C
B
A
0
...
SH 2 OF 2

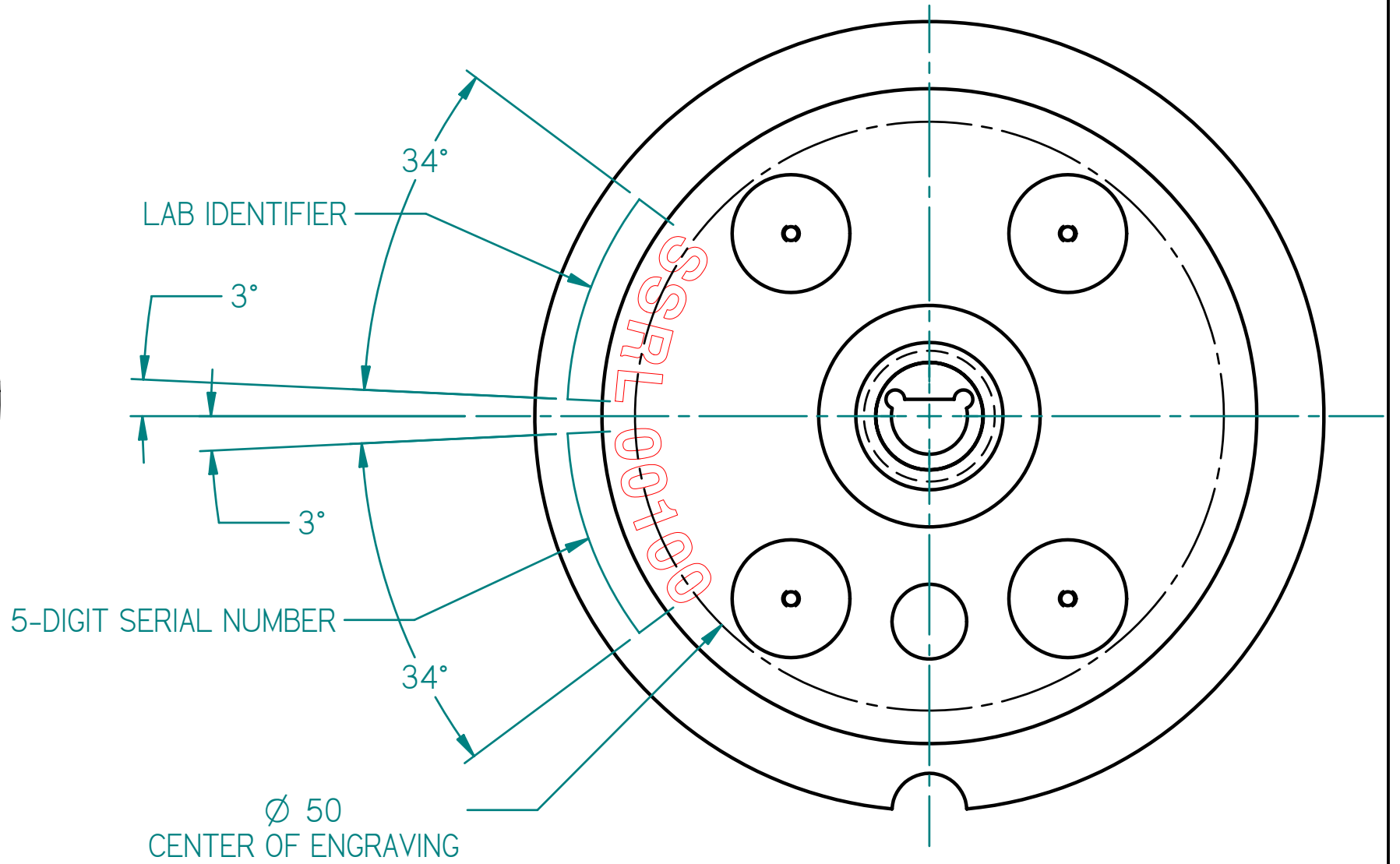
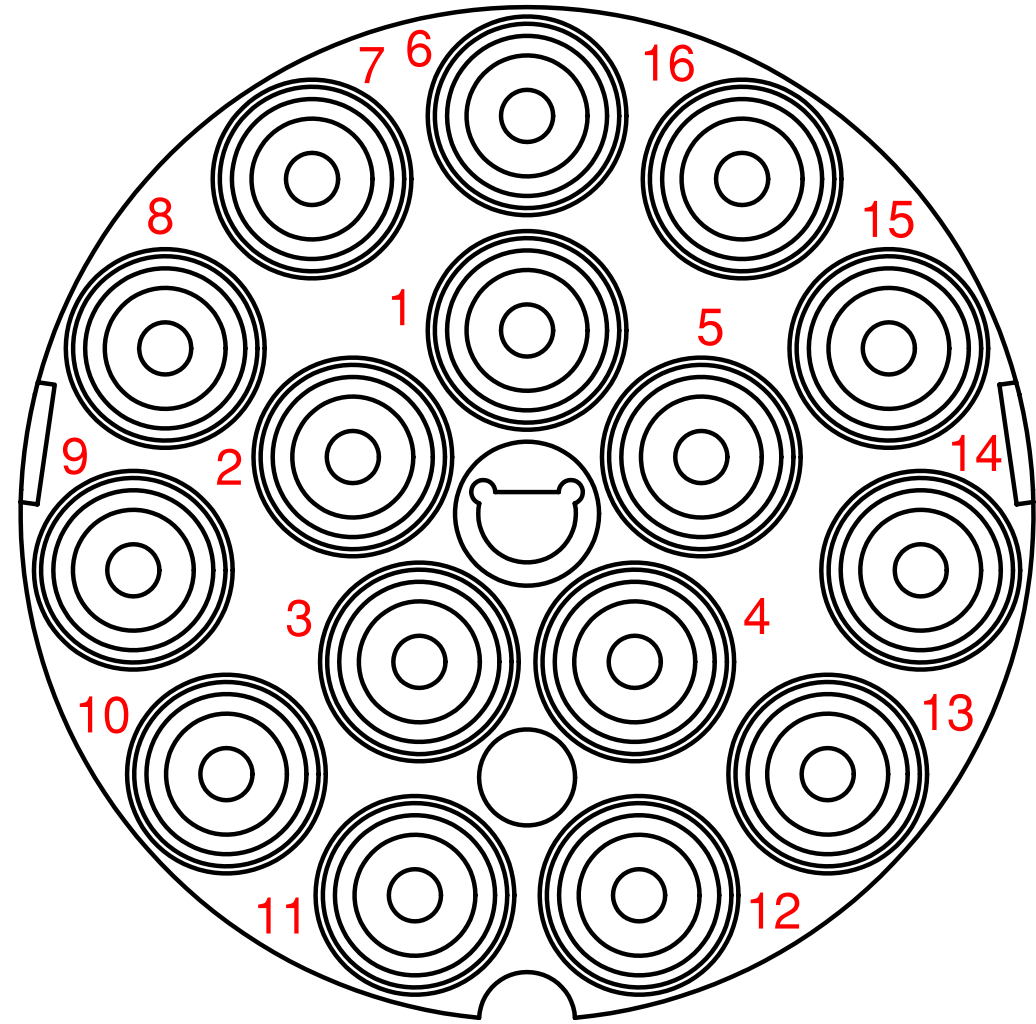
PROPRIETARY DATA OF STANFORD UNIVERSITY AND/OR U.S. DEPARTMENT OF ENERGY
 RECIPIENT SHALL NOT PUBLISH THE WITHIN INFORMATION WITHOUT SPECIFIC
 PERMISSION OF STANFORD UNIVERSITY

B 0 ---

REV	DESCRIPTION	DWN	CHKR	APVD	DATE
---	---	---	---	---	---

TEXT FONT: SINGLE LINE SANS SERIF
 TEXT SIZE 2.2-2.5 mm

TEXT FONT: HEAVY WEIGHT SANS SERIF
 TEXT SIZE: 4.0-4.5 mm



---	SCALE: 2:1	DO NOT SCALE DRAWING	CAD FILE NAME:		
---	DIMENSIONING AND TOLERANCING IS IN ACCORDANCE WITH ASME Y14.5M-1994.	STANFORD SYNCHROTRON RADIATION LABORATORY U.S. DEPARTMENT OF ENERGY	UNIVERSAL V1-PUCK		
---	UNLESS OTHERWISE SPECIFIED DIMENSIONS ARE IN MM. TOLERANCES: BREAK EDGES .125-.400 INTERNAL CORNERS R.400 MAX	SLAC, STANFORD UNIVERSITY STANFORD, CALIFORNIA	ENCLOSURE		
---	FRACTIONS ± --- DEC .XX ± .10 .XXX ± .050 .XXXX ± ---	ENGR _____ DATE _____ DWN _____ CHKR _____	HOUSING		
---	ANGLE ± --- ALL SURF 1.6/√	APPROVALS --- --- --- ---	LASER ENGRAVING		
NEXT ASSEMBLIES:			DRAWING NUMBER ---	REVISION NUMBER 0	B

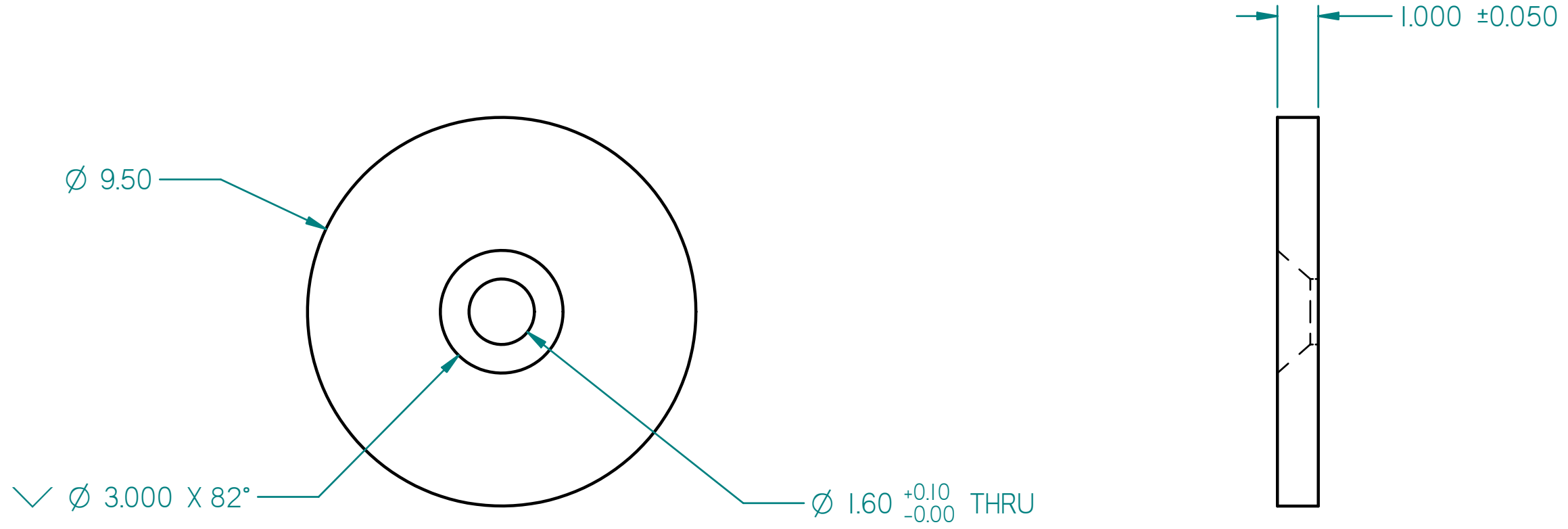
SH 1 OF 1

PROPRIETARY DATA OF STANFORD UNIVERSITY AND/OR U.S. DEPARTMENT OF ENERGY
 RECIPIENT SHALL NOT PUBLISH THE WITHIN INFORMATION WITHOUT SPECIFIC
 PERMISSION OF STANFORD UNIVERSITY

B 0 ---

REV	DESCRIPTION	DWN	CHKR	APVD	DATE
-----	-------------	-----	------	------	------

- NOTE:
1. MATERIAL: 416 STAINLESS STEEL.
 2. INTERNAL CORNERS: R 0.13 MAX.
 3. BREAK EXPOSED SHARP EDGES: 0.13 MIN, 0.26 MAX.



---	SCALE: 8:1	DO NOT SCALE DRAWING	CAD FILE NAME:		
---	DIMENSIONING AND TOLERANCING IS IN ACCORDANCE WITH ASME Y14.5M-1994.	STANFORD SYNCHROTRON RADIATION LABORATORY U.S. DEPARTMENT OF ENERGY	UNIVERSAL V1-PUCK		
---	UNLESS OTHERWISE SPECIFIED DIMENSIONS ARE IN MM. TOLERANCES: BREAK EDGES .125-.400 INTERNAL CORNERS R.400 MAX	SLAC, STANFORD UNIVERSITY STANFORD, CALIFORNIA	ENCLOSURE		
---	FRACTIONS ± --- DEC .XX ± .10 .XXX ± .050 .XXXX ± ---	ENGR _____ DATE _____ DWN _____ CHKR _____	DISK PLATE		
---	ANGLE ± .25 ALL SURF 1.6 ✓	APPROVALS --- --- --- ---	DRAWING NUMBER ---	REVISION NUMBER 0	B
NEXT ASSEMBLIES:					

1 OF 1 SH

NOTE:

1. COVER (ITEM 3) SHALL BE LASER ENGRAVED BEFORE ASSEMBLING.
2. RING MAGNETS (ITEM 2) SHALL BE INSTALLED IN PROPER ORIENTATION SO THAT THEY WILL ATTRACT THE MAGNETS OF THE ENCLOSURE HOUSING ASSEMBLY.
3. INSERT DOWEL PIN INTO THESE TWO HOLES TO ALIGN COVER (ITEM 3) WITH HOUSING (ITEM 1) DURING ASSEMBLING.
4. CLIPS (ITEM 6) OR SHORT CLIPS (ITEM 8) SHALL NOT PROTRUDE THE HOUSING (ITEM 1).
5. CLIPS (ITEM 6) SHALL BE FASTENED TO HOUSING (ITEM 1) BY SCREWS (ITEM 7). SHORT CLIPS (ITEM 8) SHALL BE BAGGED AND ATTACHED TO THE ASSEMBLY AS AN ALTERNATIVE OPTION.

REV	DESCRIPTION	DWN	CHKR	APVD	DATE
-----	-------------	-----	------	------	------

D

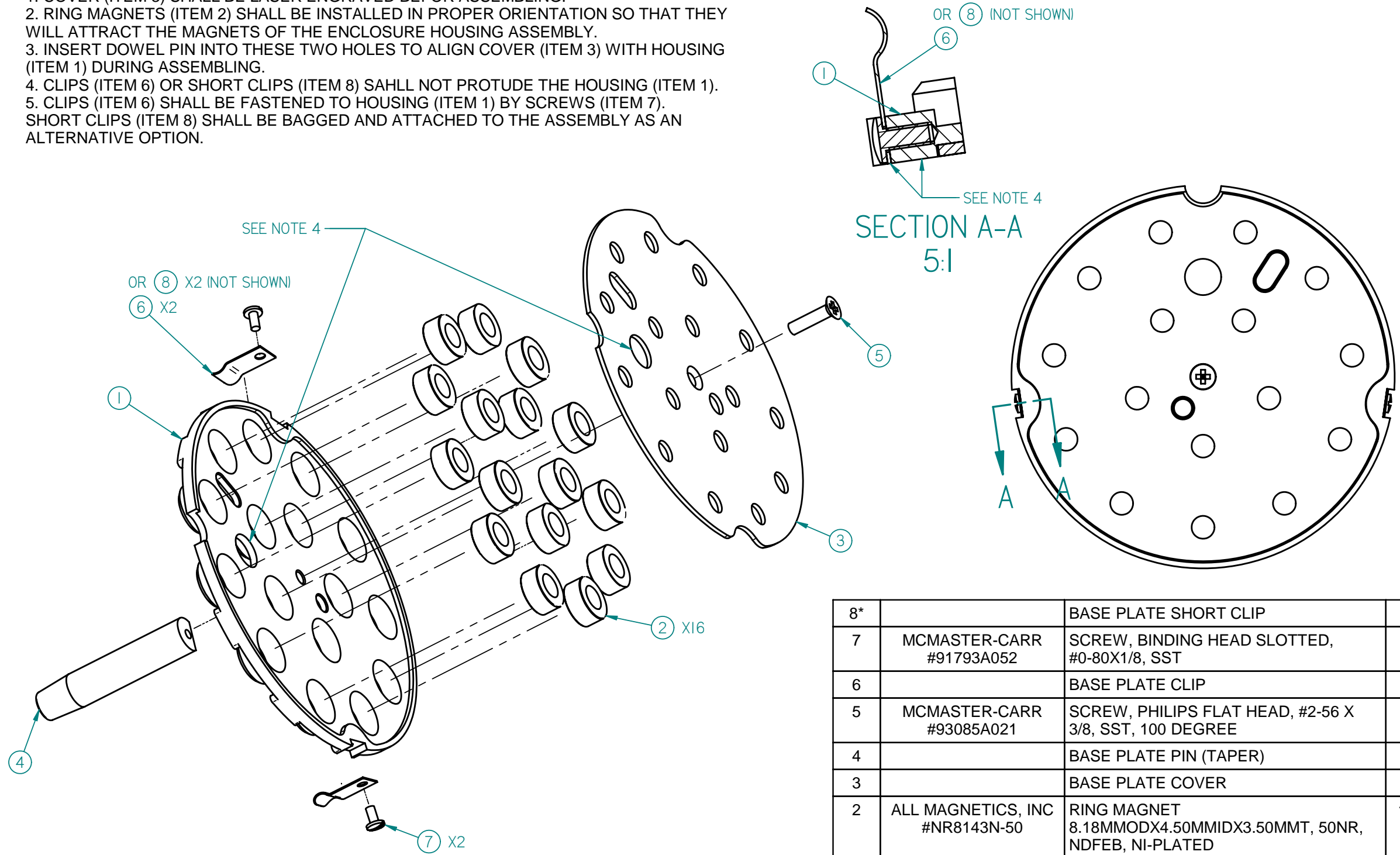
D

C

C

B

A

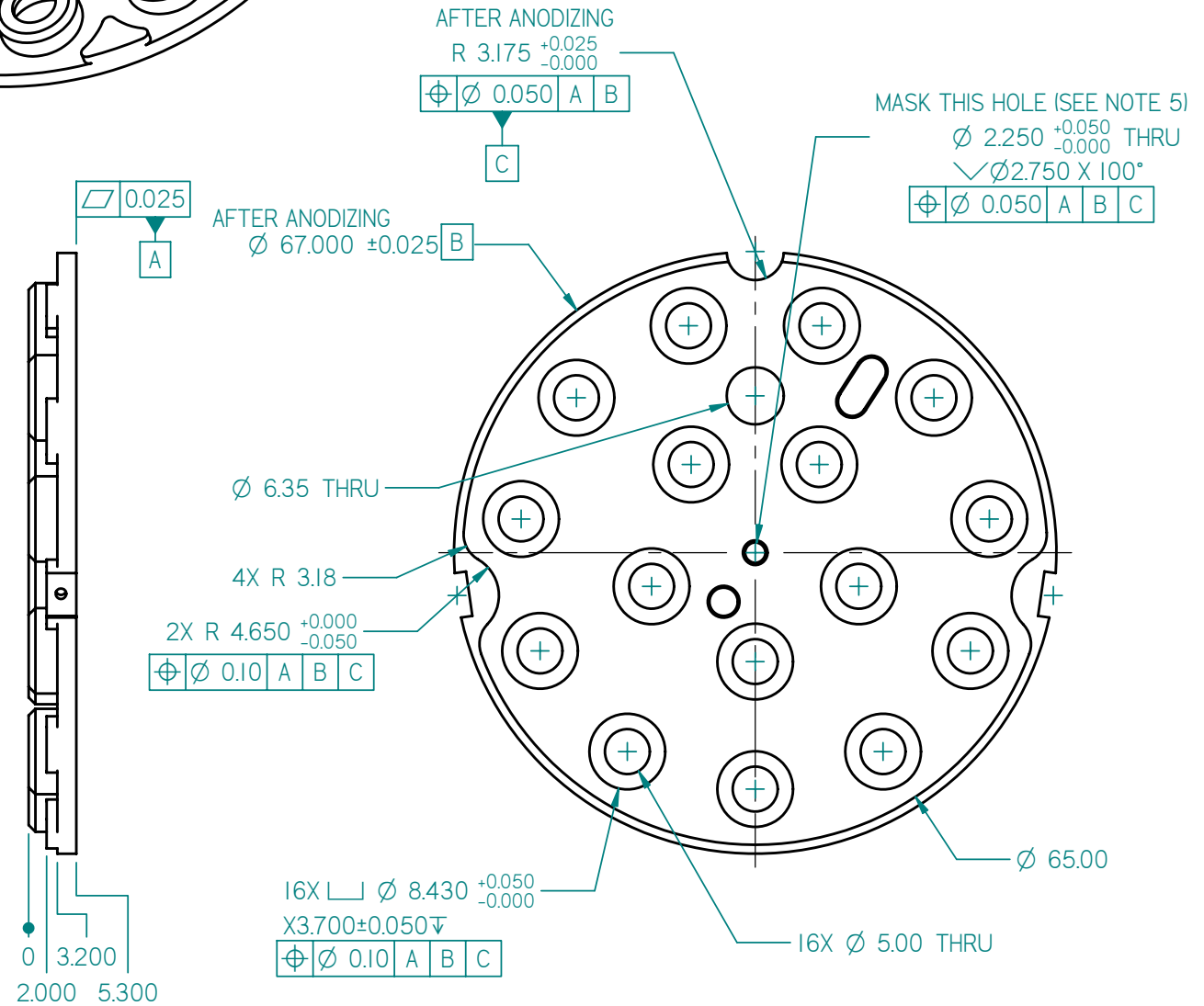
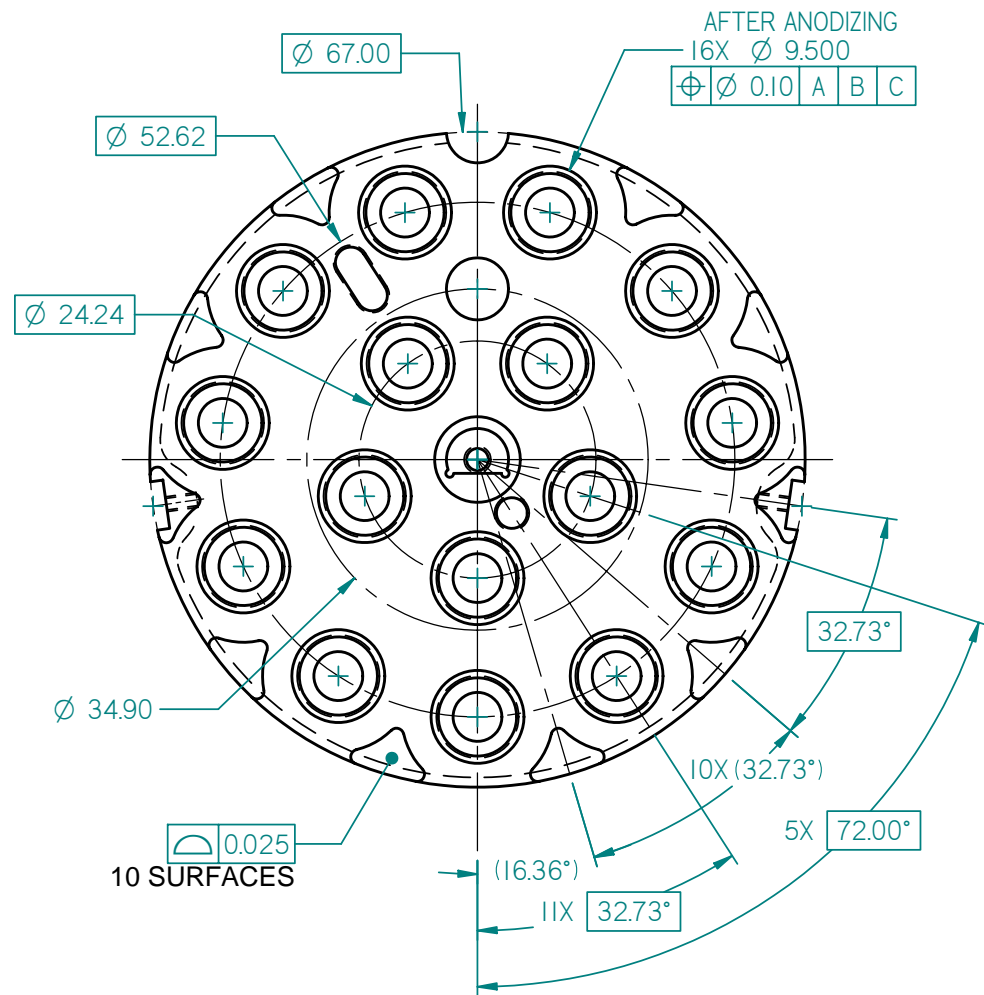
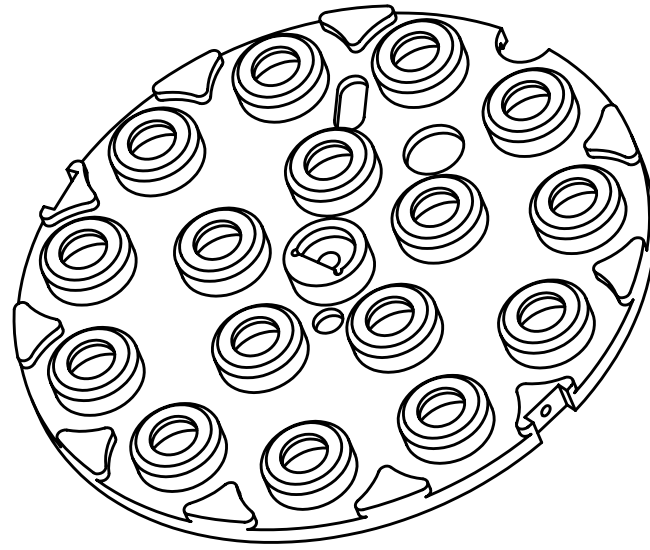


8*		BASE PLATE SHORT CLIP	2
7	MCMaster-CARR #91793A052	SCREW, BINDING HEAD SLOTTED, #0-80X1/8, SST	2
6		BASE PLATE CLIP	2
5	MCMaster-CARR #93085A021	SCREW, PHILIPS FLAT HEAD, #2-56 X 3/8, SST, 100 DEGREE	1
4		BASE PLATE PIN (TAPER)	1
3		BASE PLATE COVER	1
2	ALL MAGNETICS, INC #NR8143N-50	RING MAGNET 8.18MMODX4.50MMIDX3.50MMT, 50NR, NDFEB, NI-PLATED	16
1		BASE PLATE HOUSING	1
ITEM	STOCK OR PART NO	TITLE OR DESCRIPTION	QTY

---	DIMENSIONING AND TOLERANCING IS IN ACCORDANCE WITH ASME Y14.5M-1994.	SCALE: 2:1	DO NOT SCALE DRAWING	CAD FILE NAME:
---	UNLESS OTHERWISE SPECIFIED DIMENSIONS ARE IN MM. TOLERANCES: BREAK EDGES .125-.400 INTERNAL CORNERS R.400 MAX FRACTIONS ± --- DEC .xx ± .10 .xxx ± .050 .xxxx ± --- ANGLE ± .25 ALL SURF 1.6	STANFORD SYNCHROTRON RADIATION LABORATORY U.S. DEPARTMENT OF ENERGY SLAC, STANFORD UNIVERSITY STANFORD, CALIFORNIA		UNIVERSAL V1-PUCK BASE PLATE ASSEMBLY TAPER PIN
---	PROPRIETARY DATA OF STANFORD UNIVERSITY AND/OR U. S. DEPARTMENT OF ENERGY. RECIPIENT SHALL NOT PUBLISH THE INFORMATION WITHIN UNLESS GRANTED SPECIFIC PERMISSION OF STANFORD UNIVERSITY.	APPROVALS	DRAWING NUMBER: --- REVISION NUMBER: 0 C	
NEXT ASSEMBLIES:				SH 1 OF 1

NOTE:

1. MATERIAL: ALUMINUM 7075-T651.
2. SOME HIDDEN LINES LEFT OUT FOR CLARITY.
3. INTERNAL CORNERS: R 0.13 MAX.
4. BREAK EXPOSED SHARP EDGES: 0.13 MIN, 0.26 MAX.
5. PART SHALL BE HARD ANODIZED (0.05 THICK). MASK ALL TAPPED HOLES AND CENTER CUT-OUT SHOWN IN DETAIL C BEFORE ANODIZING.

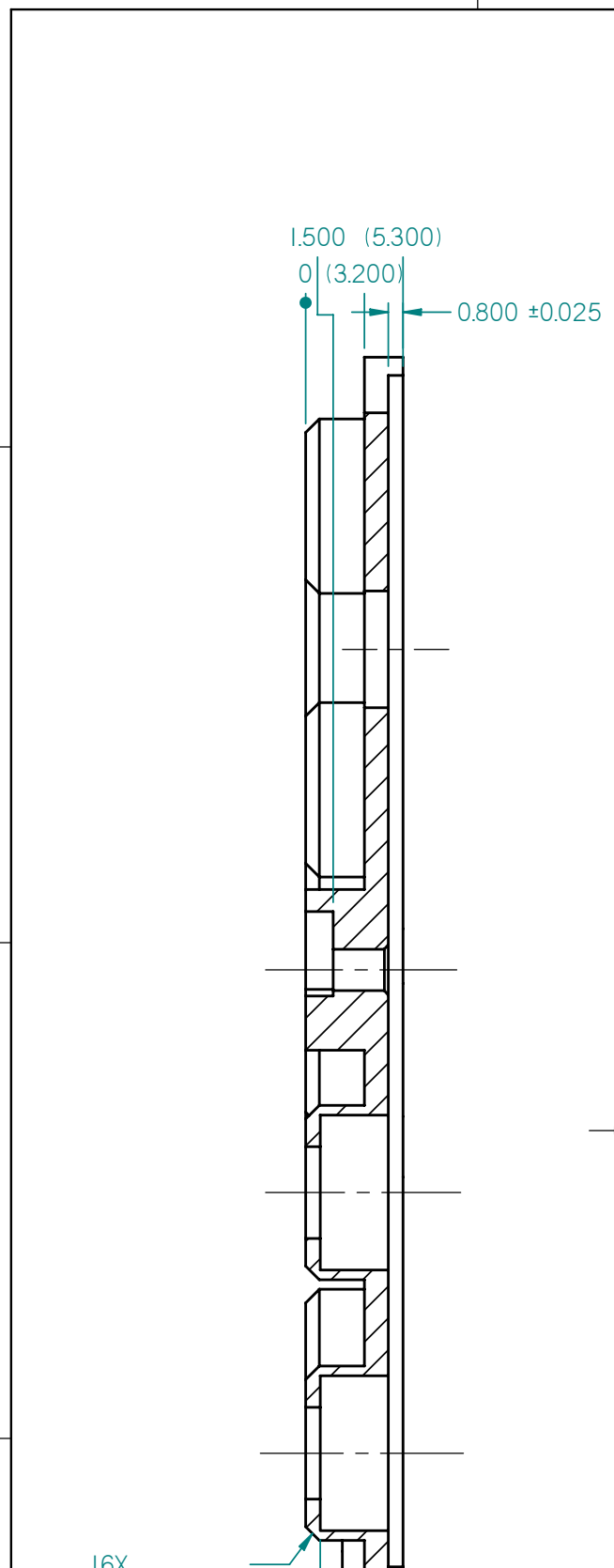


REV	DESCRIPTION	DWN	CHKR	APVD	DATE

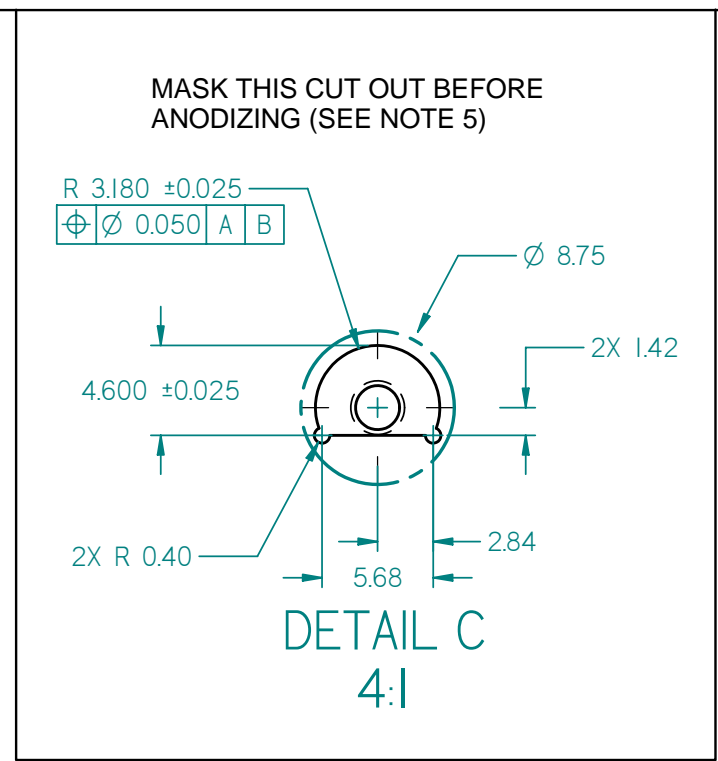
---	DIMENSIONING AND TOLERANCING IS IN ACCORDANCE WITH ASME Y14.5M-1994.	SCALE: 2:1	DO NOT SCALE DRAWING	CAD FILE NAME:
---	UNLESS OTHERWISE SPECIFIED DIMENSIONS ARE IN MM.	STANFORD SYNCHROTRON RADIATION LABORATORY U.S. DEPARTMENT OF ENERGY SLAC, STANFORD UNIVERSITY STANFORD, CALIFORNIA		UNIVERSAL V1-PUCK BASE PLATE MAGNET HOUSING P 1 OF 3
---	TOLERANCES: BREAK EDGES .125-400 INTERNAL CORNERS R.400 MAX FRACTIONS \pm --- DEC .xx ± 0.10 .xxx ± 0.050 .xxxx \pm --- ANGLE $\pm 0.25^\circ$ ALL SURF	PROPRIETARY DATA OF STANFORD UNIVERSITY AND/OR U. S. DEPARTMENT OF ENERGY. RECIPIENT SHALL NOT PUBLISH THE INFORMATION WITHIN UNLESS GRANTED SPECIFIC PERMISSION OF STANFORD UNIVERSITY.		
---	NEXT ASSEMBLIES:	APPROVALS		DRAWING NUMBER
---	---	---		REVISION NUMBER
---	---	---		0 C

REV	DESCRIPTION	DWN	CHKR	APVD	DATE

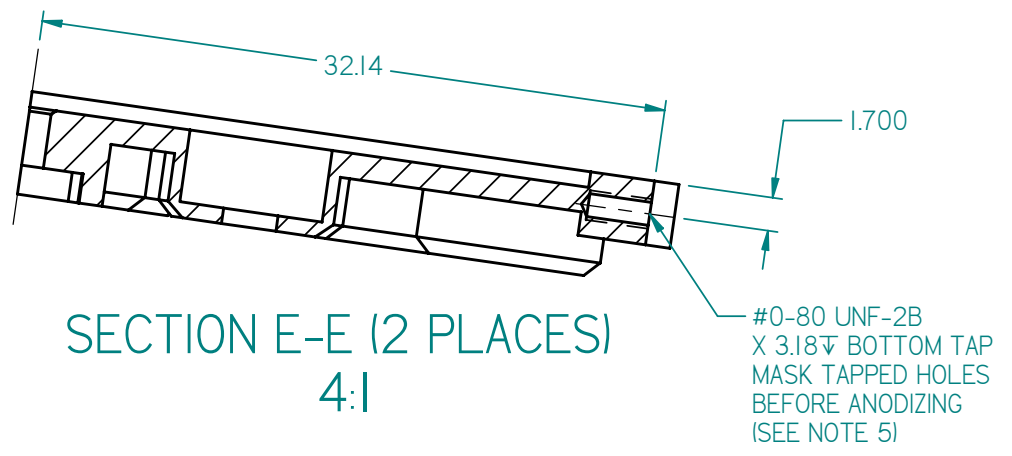
D
C
B
A



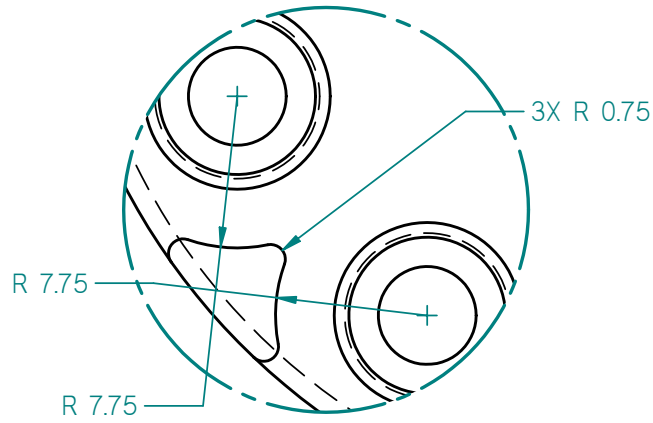
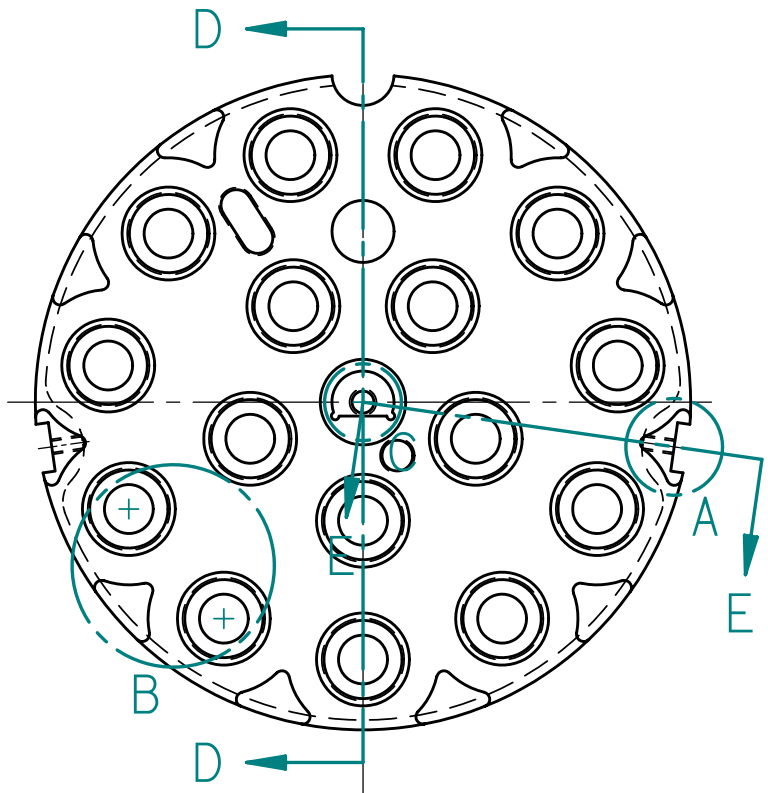
SECTION D-D
4:1



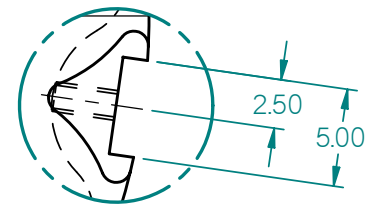
DETAIL C
4:1



SECTION E-E (2 PLACES)
4:1



DETAIL B (10 PLACES)
4:1

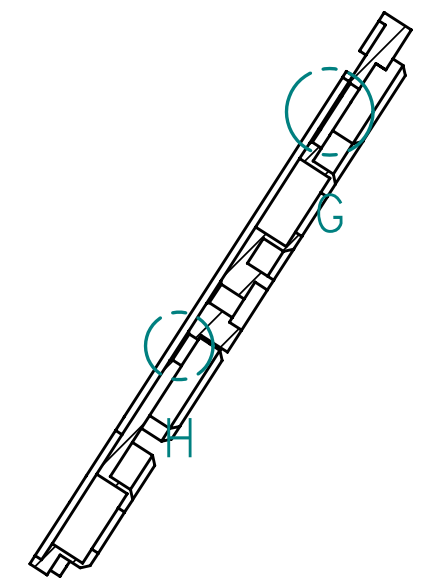
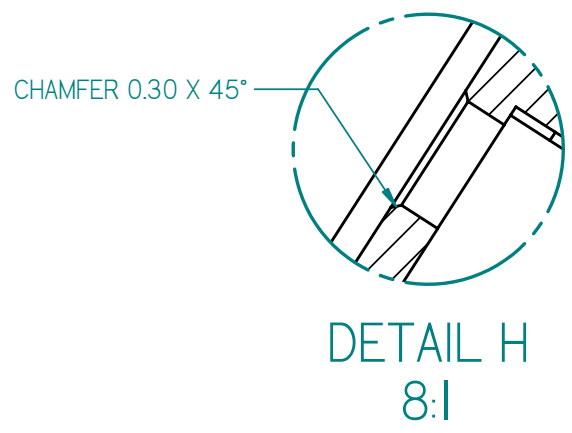
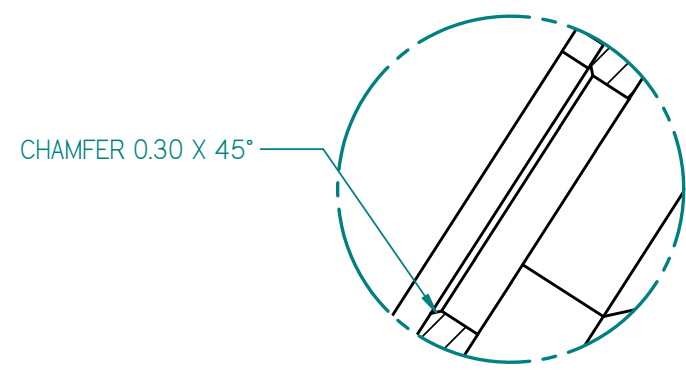
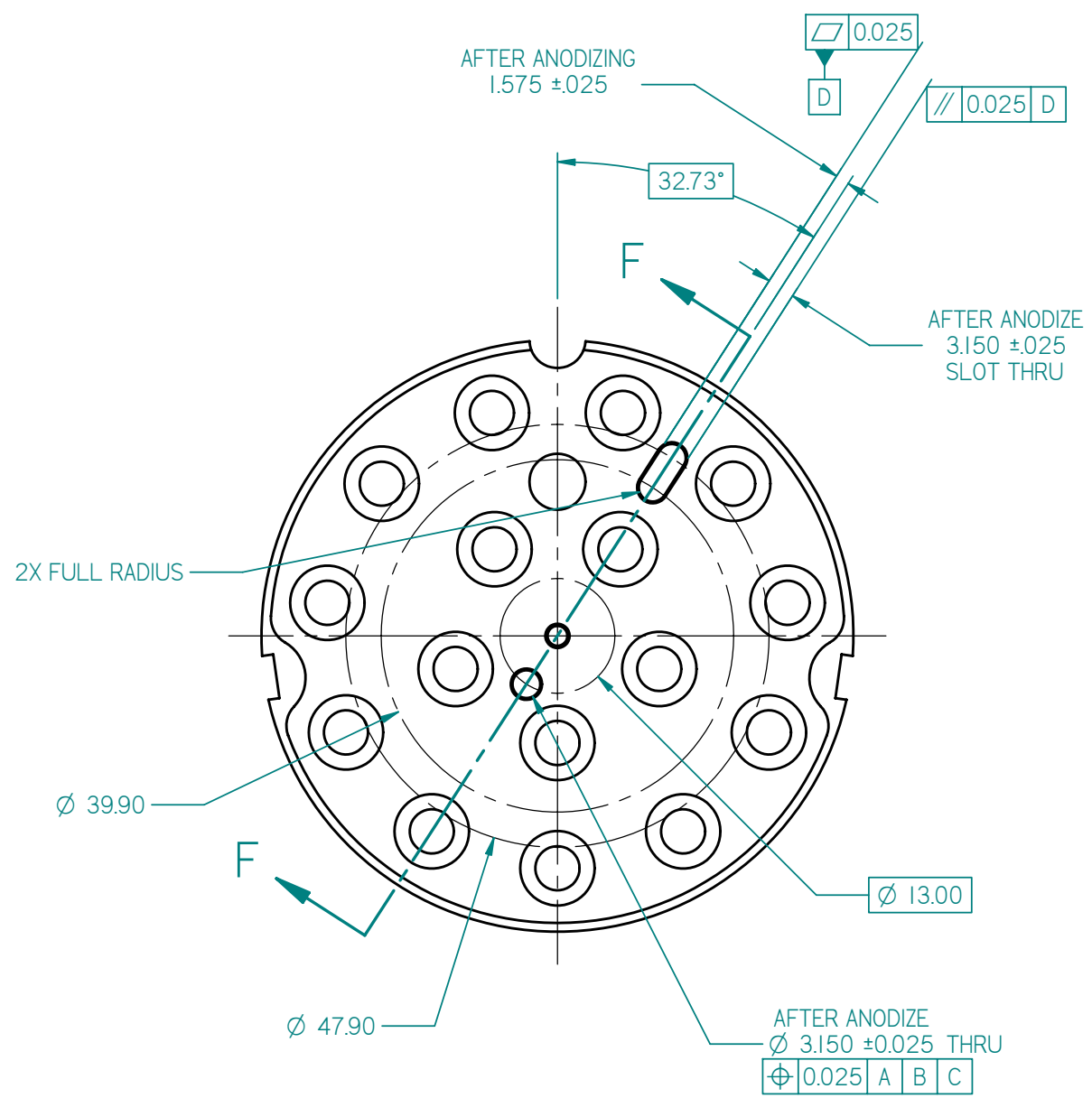


DETAIL A (2 PLACES)
4:1

---	DIMENSIONING AND TOLERANCING IS IN ACCORDANCE WITH ASME Y14.5M-1994.	SCALE: 2:1	DO NOT SCALE DRAWING	CAD FILE NAME:
---	UNLESS OTHERWISE SPECIFIED DIMENSIONS ARE IN MM.	STANFORD SYNCHROTRON RADIATION LABORATORY U.S. DEPARTMENT OF ENERGY		UNIVERSAL V1-PUCK BASE PLATE MAGNET HOUSING (DETAIL) P 2 OF 3
---	TOLERANCES: BREAK EDGES .125-.400 INTERNAL CORNERS R.400 MAX FRACTIONS ± --- DEC .xx ± .10 .xxx ± .050 .xxxx ± --- ANGLE ± 0.25° ALL SURF	SLAC, STANFORD UNIVERSITY	STANFORD, CALIFORNIA	
---	NEXT ASSEMBLIES:	PROPRIETARY DATA OF STANFORD UNIVERSITY AND/OR U. S. DEPARTMENT OF ENERGY. RECIPIENT SHALL NOT PUBLISH THE INFORMATION WITHIN UNLESS GRANTED SPECIFIC PERMISSION OF STANFORD UNIVERSITY.	APPROVALS	DRAWING NUMBER ---
---				REVISION NUMBER 0 C

SH 2 OF 3

REV	DESCRIPTION	DWN	CHKR	APVD	DATE



SECTION F-F

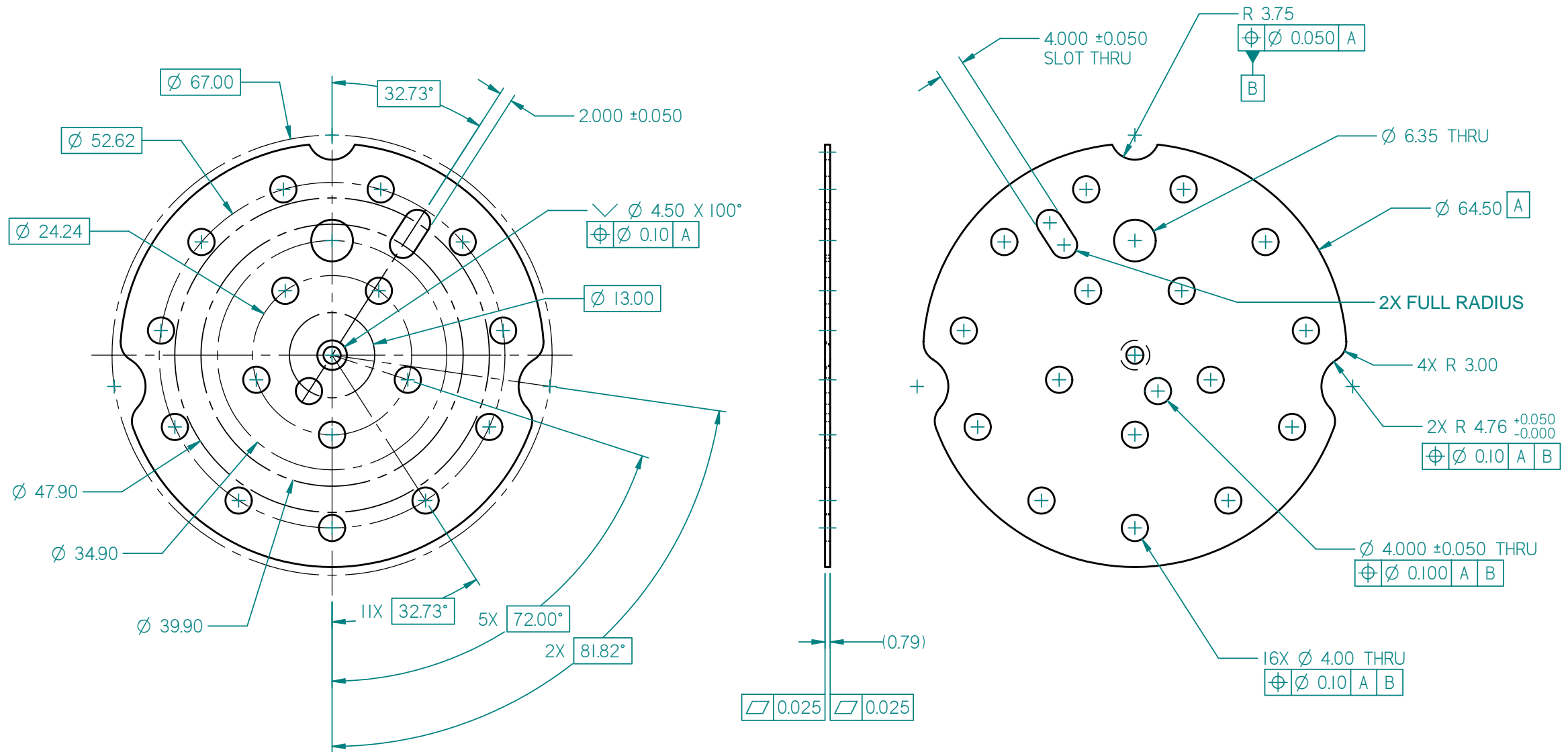
D
C
B
A

D
C
C
0
C
SH 3 OF 3

---	DIMENSIONING AND TOLERANCING IS IN ACCORDANCE WITH ASME Y14.5M-1994.	SCALE: 2:1	DO NOT SCALE DRAWING	CAD FILE NAME:
---	UNLESS OTHERWISE SPECIFIED DIMENSIONS ARE IN MM.	STANFORD SYNCHROTRON RADIATION LABORATORY U.S. DEPARTMENT OF ENERGY SLAC, STANFORD UNIVERSITY STANFORD, CALIFORNIA		UNIVERSAL V1-PUCK BASE PLATE MAGNET HOUSING (DETAIL) SHEET 3 OF 3
---	TOLERANCES: BREAK EDGES .125-400 INTERNAL CORNERS R.400 MAX FRACTIONS ± --- DEC .xx ± 0.10 .xxx ± 0.050 .xxxx ± --- ANGLE ± 0.25° ALL SURF	PROPRIETARY DATA OF STANFORD UNIVERSITY AND/OR U. S. DEPARTMENT OF ENERGY. RECIPIENT SHALL NOT PUBLISH THE INFORMATION WITHIN UNLESS GRANTED SPECIFIC PERMISSION OF STANFORD UNIVERSITY.		
---	NEXT ASSEMBLIES:	APPROVALS	DRAWING NUMBER	REVISION NUMBER
---		---	---	0 C

- NOTE:
 1. MATERIAL: .031" +/- .001" THICK 303 OR 304 STAINLESS STEEL SHIM STOCK.
 2. INTERNAL CORNERS: R 0.13 MAX.
 3. BREAK EXPOSED SHARP EDGES: 0.13 MIN, 0.26 MAX.

REV	DESCRIPTION	DWN	CHKR	APVD	DATE

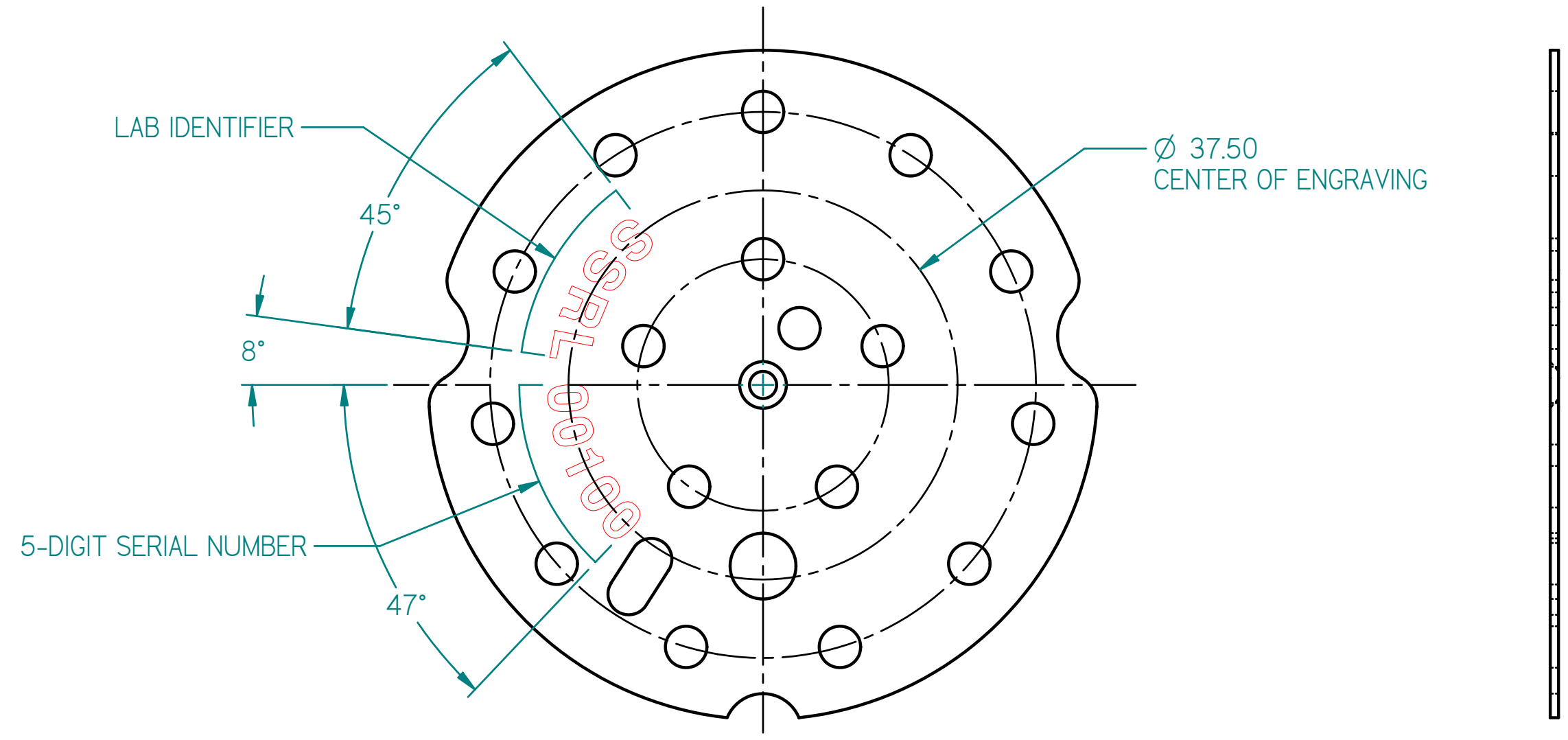


---	DIMENSIONING AND TOLERANCING IS IN ACCORDANCE WITH ASME Y14.5M-1994.	SCALE: 2:1	DO NOT SCALE DRAWING	CAD FILE NAME:
---	UNLESS OTHERWISE SPECIFIED DIMENSIONS ARE IN MM.	STANFORD SYNCHROTRON RADIATION LABORATORY U.S. DEPARTMENT OF ENERGY SLAC, STANFORD UNIVERSITY STANFORD, CALIFORNIA		UNIVERSAL V1-PUCK BASE PLATE MAGNET COVER
---	TOLERANCES: BREAK EDGES .125-.400 INTERNAL CORNERS R.400 MAX FRACTIONS ± --- DEC .xx ± .10 .xxx ± .050 .xxxx ± --- ANGLE ± .25°	PROPRIETARY DATA OF STANFORD UNIVERSITY AND/OR U. S. DEPARTMENT OF ENERGY. RECIPIENT SHALL NOT PUBLISH THE INFORMATION WITHIN UNLESS GRANTED SPECIFIC PERMISSION OF STANFORD UNIVERSITY.		
---	NEXT ASSEMBLIES:	APPROVALS ---	DRAWING NUMBER ---	REVISION NUMBER 0
---	ALL SURF 1.6	---	---	C

REV	DESCRIPTION	DWN	CHKR	APVD	DATE
-----	-------------	-----	------	------	------

NOTE:
ENGRAVE ON THE CT'SINK SIDE

TEXT FONT: HEAVY WEIGHT SANS SERIF
TEXT SIZE: 4.0-4.5mm



PROPRIETARY DATA OF STANFORD UNIVERSITY AND/OR U.S. DEPARTMENT OF ENERGY
 RECIPIENT SHALL NOT PUBLISH THE WITHIN INFORMATION WITHOUT SPECIFIC
 PERMISSION OF STANFORD UNIVERSITY

---	SCALE: 2:1	DO NOT SCALE DRAWING	CAD FILE NAME:		
---	DIMENSIONING AND TOLERANCING IS IN ACCORDANCE WITH ASME Y14.5M-1994.	STANFORD SYNCHROTRON RADIATION LABORATORY U.S. DEPARTMENT OF ENERGY	UNIVERSAL V1-PUCK		
---	UNLESS OTHERWISE SPECIFIED DIMENSIONS ARE IN MM. TOLERANCES: BREAK EDGES .125-.400 INTERNAL CORNERS R.400 MAX	SLAC, STANFORD UNIVERSITY STANFORD, CALIFORNIA	BASE PLATE		
---	FRACTIONS ± --- DEC .XX ± .10 .XXX ± .050 .XXXX ± ---	ENGR _____ DATE _____ DWN _____ CHKR _____	MAGNET COVER		
---	ANGLE ± 0.25 ALL SURF 1.6 ✓	APPROVALS --- --- --- ---	LASER ENGRAVING		
NEXT ASSEMBLIES:			DRAWING NUMBER ---	REVISION NUMBER 0	B

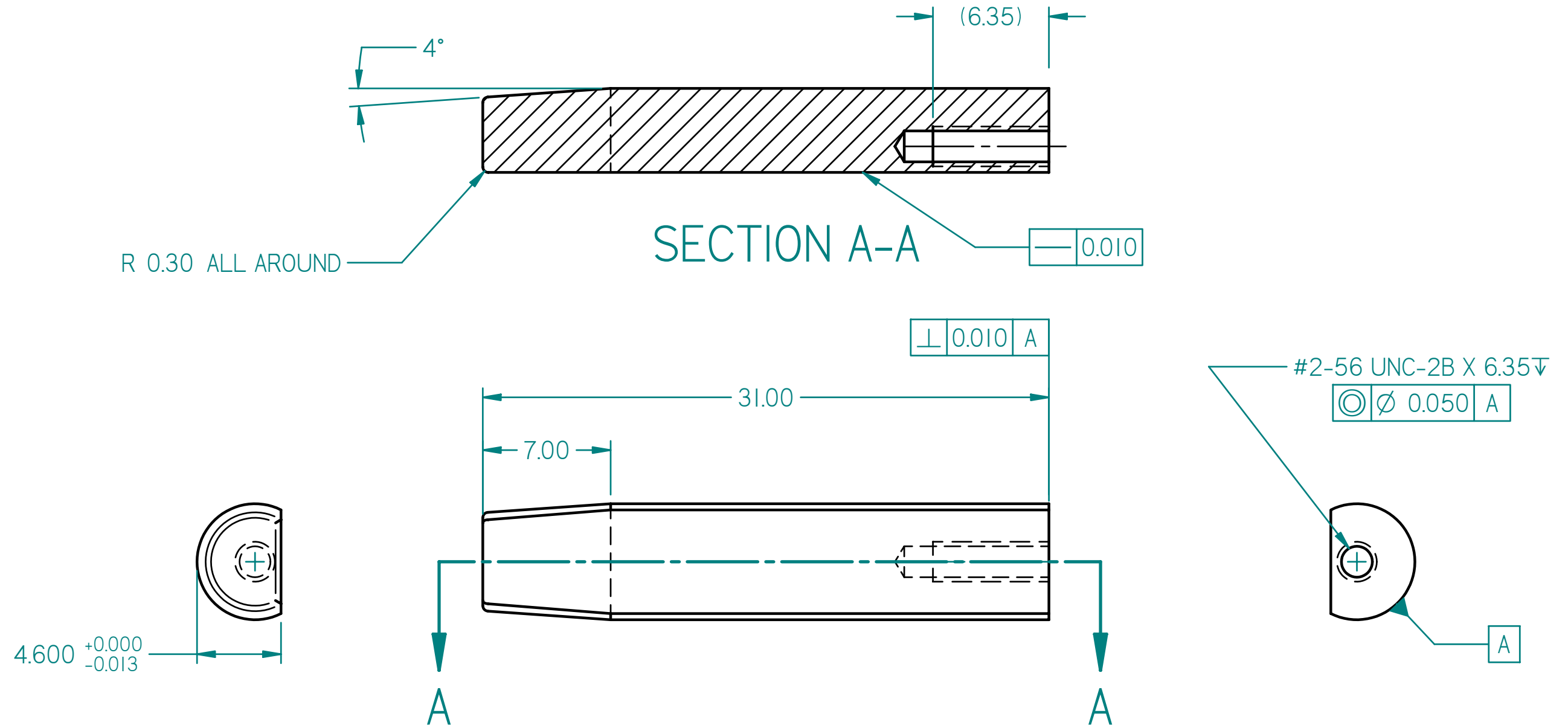
1 OF 1 SHEET

PROPRIETARY DATA OF STANFORD UNIVERSITY AND/OR U.S. DEPARTMENT OF ENERGY
 RECIPIENT SHALL NOT PUBLISH THE WITHIN INFORMATION WITHOUT SPECIFIC
 PERMISSION OF STANFORD UNIVERSITY

B 0 ---

REV	DESCRIPTION	DWN	CHKR	APVD	DATE
---	---	---	---	---	---

NOTE: UNLESS OTHERWISE SPECIFIED
 1. MATERIAL: BERG STOCK # S1-15, STAINLESS GROUND STOCK,
 DIAMETER .2500" +.0000"/-.0002", 303 STAINLESS STEEL.



---	SCALE: 4:1	DO NOT SCALE DRAWING	CAD FILE NAME:		
---	DIMENSIONING AND TOLERANCING IS IN ACCORDANCE WITH ASME Y14.5M-1994.	STANFORD SYNCHROTRON RADIATION LABORATORY U.S. DEPARTMENT OF ENERGY	UNIVERSAL V1-PUCK		
---	UNLESS OTHERWISE SPECIFIED DIMENSIONS ARE IN MM. TOLERANCES: BREAK EDGES .125-.400 INTERNAL CORNERS R.400 MAX	SLAC, STANFORD UNIVERSITY STANFORD, CALIFORNIA	BASE PLATE		
---	FRACTIONS ± --- DEC .XX ± 0.10 .XXX ± 0.050 .XXXX ± ---	ENGR _____ DATE _____ DWN _____ CHKR _____	ALIGNMENT PIN (TAPER)		
---	ANGLE ± 0.25 ALL SURF 1.6 ✓	APPROVALS --- --- --- ---	DRAWING NUMBER ---	REVISION NUMBER 0	B

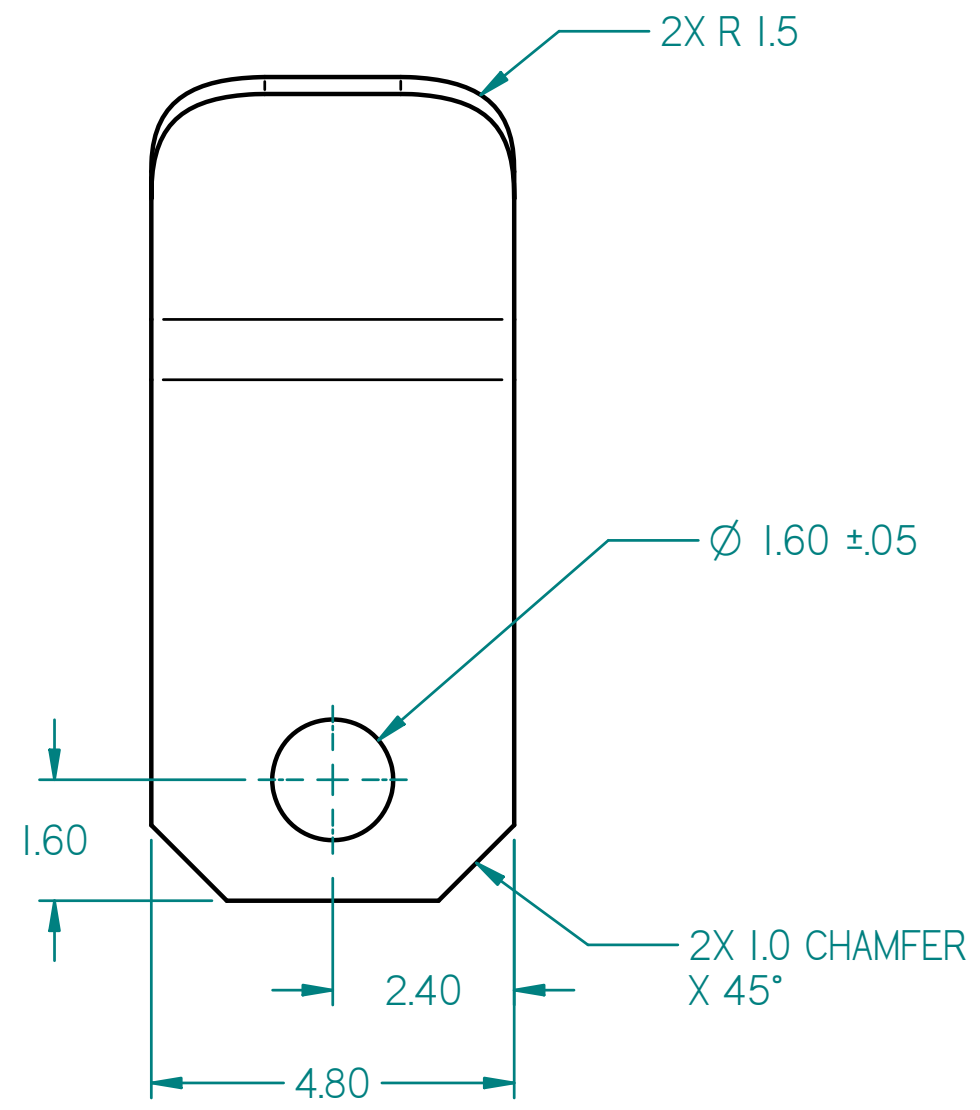
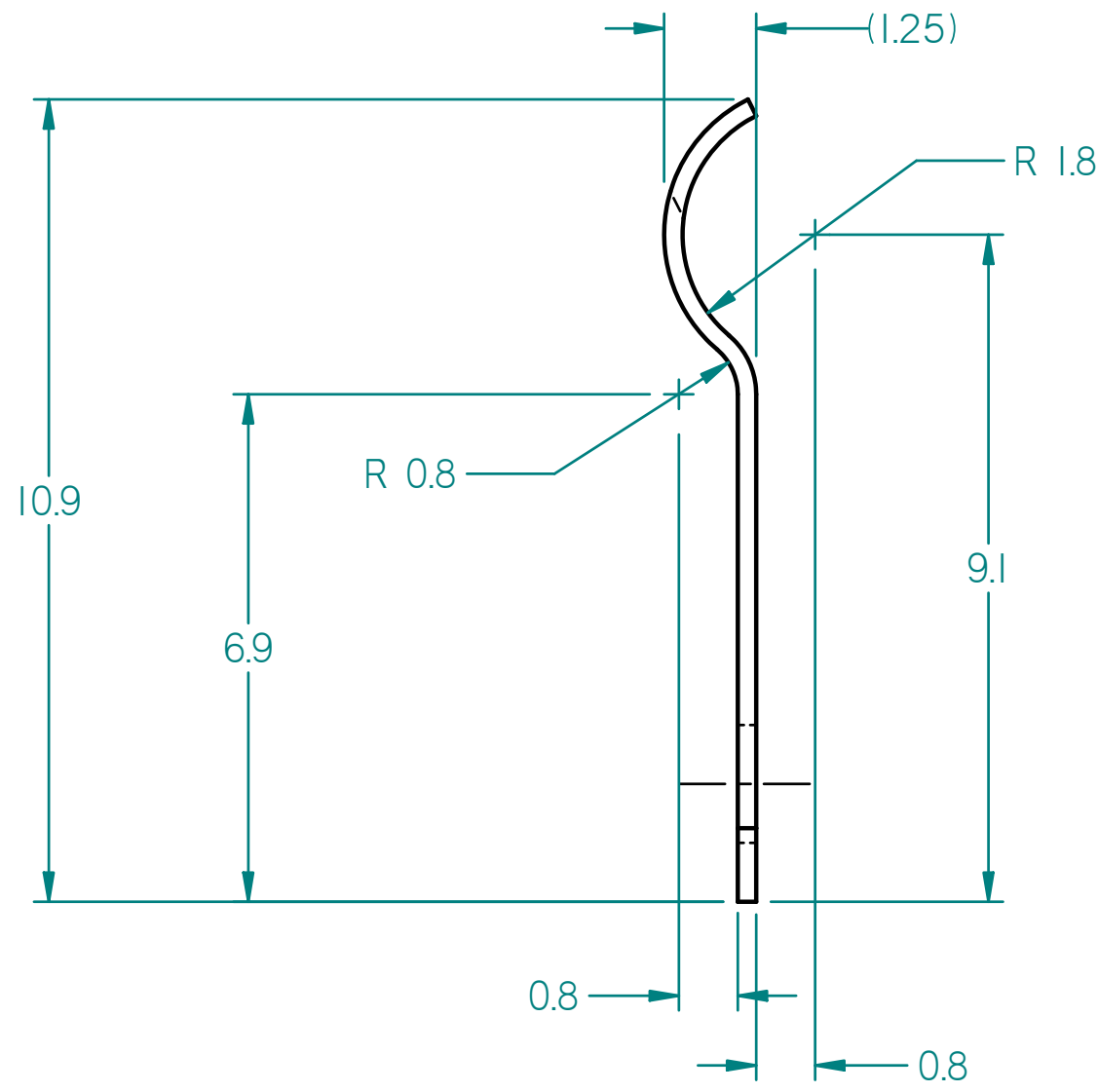
1 OF 1 SHEET

PROPRIETARY DATA OF STANFORD UNIVERSITY AND/OR U.S. DEPARTMENT OF ENERGY
 RECIPIENT SHALL NOT PUBLISH THE WITHIN INFORMATION WITHOUT SPECIFIC
 PERMISSION OF STANFORD UNIVERSITY

B 0 ---

REV	DESCRIPTION	DWN	CHKR	APVD	DATE

NOTE: UNLESS OTHERWISE SPECIFIED
 1. MATERIAL: .010" THICK SPRING STEELS.
 2. DIMENSION TOLERANCE OF X.X IS +0.2/-0.2.



---	SCALE: 10:1	DO NOT SCALE DRAWING	CAD FILE NAME:		
---	DIMENSIONING AND TOLERANCING IS IN ACCORDANCE WITH ASME Y14.5M-1994.	STANFORD SYNCHROTRON RADIATION LABORATORY U.S. DEPARTMENT OF ENERGY	UNIVERSAL V1-PUCK		
---	UNLESS OTHERWISE SPECIFIED DIMENSIONS ARE IN MM. TOLERANCES: BREAK EDGES .125-.400 INTERNAL CORNERS R.400 MAX	SLAC, STANFORD UNIVERSITY STANFORD, CALIFORNIA	BASE PLATE		
---	FRACTIONS ± --- DEC .XX ± 0.10 .XXX ± 0.05 .XXXX ± ---	ENGR _____ DATE _____ DWN _____ CHKR _____	CLIP-1		
---	ANGLE ± 0.25 ALL SURF 3.2 ✓	APPROVALS --- --- --- ---	DRAWING NUMBER ---	REVISION NUMBER 0	B
NEXT ASSEMBLIES:					

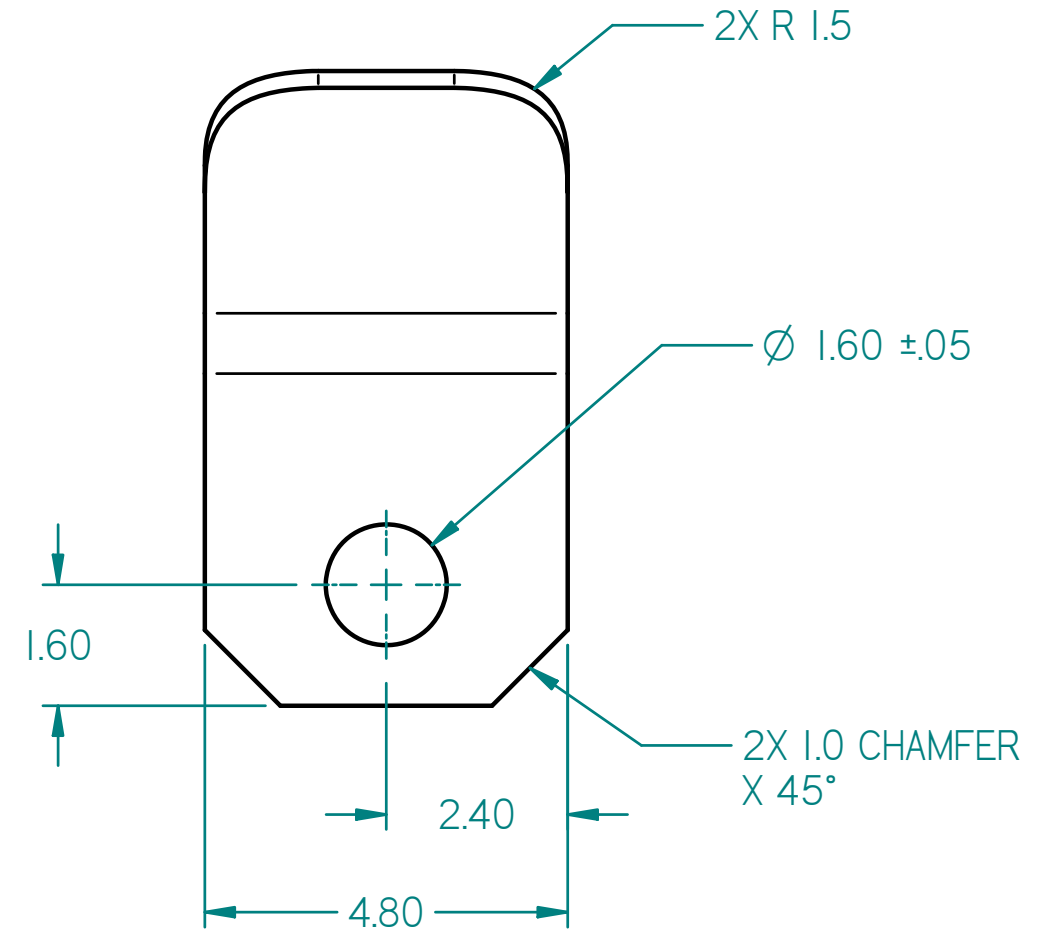
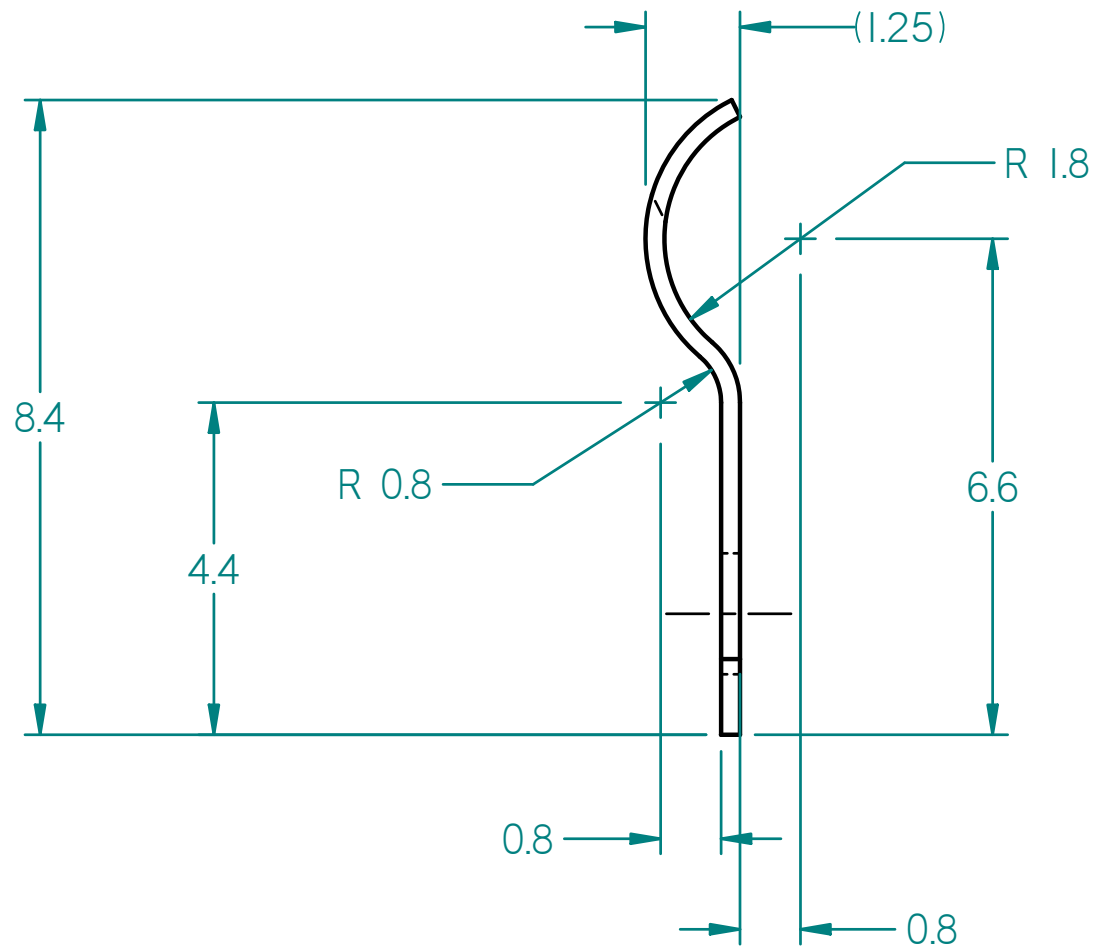
1 OF 1 SHEET

PROPRIETARY DATA OF STANFORD UNIVERSITY AND/OR U.S. DEPARTMENT OF ENERGY
 RECIPIENT SHALL NOT PUBLISH THE WITHIN INFORMATION WITHOUT SPECIFIC
 PERMISSION OF STANFORD UNIVERSITY

B 0 ---

REV	DESCRIPTION	DWN	CHKR	APVD	DATE
-----	-------------	-----	------	------	------

NOTE: UNLESS OTHERWISE SPECIFIED
 1. MATERIAL: .010" THICK SPRING STEELS.
 2. DIMENSION TOLERANCE OF X.X IS +0.2/-0.2.



---	SCALE: 10:1	DO NOT SCALE DRAWING	CAD FILE NAME:		
---	DIMENSIONING AND TOLERANCING IS IN ACCORDANCE WITH ASME Y14.5M-1994.	STANFORD SYNCHROTRON RADIATION LABORATORY U.S. DEPARTMENT OF ENERGY	UNIVERSAL V1-PUCK		
---	UNLESS OTHERWISE SPECIFIED DIMENSIONS ARE IN MM. TOLERANCES: BREAK EDGES .125-.400 INTERNAL CORNERS R.400 MAX	SLAC, STANFORD UNIVERSITY STANFORD, CALIFORNIA	BASE PLATE		
---	FRACTIONS \pm --- DEC .XX \pm 0.10 .XXX \pm 0.05 .XXXX \pm --- ANGLE \pm 0.25	ENGR _____ DATE _____ DWN _____ CHKR _____	CLIP-SHORT-1		
NEXT ASSEMBLIES:	ALL SURF 3.2 \sqrt	APPROVALS --- --- --- ---	DRAWING NUMBER ---	REVISION NUMBER 0	B

1 OF 1