

Preparing Your Sample Pin



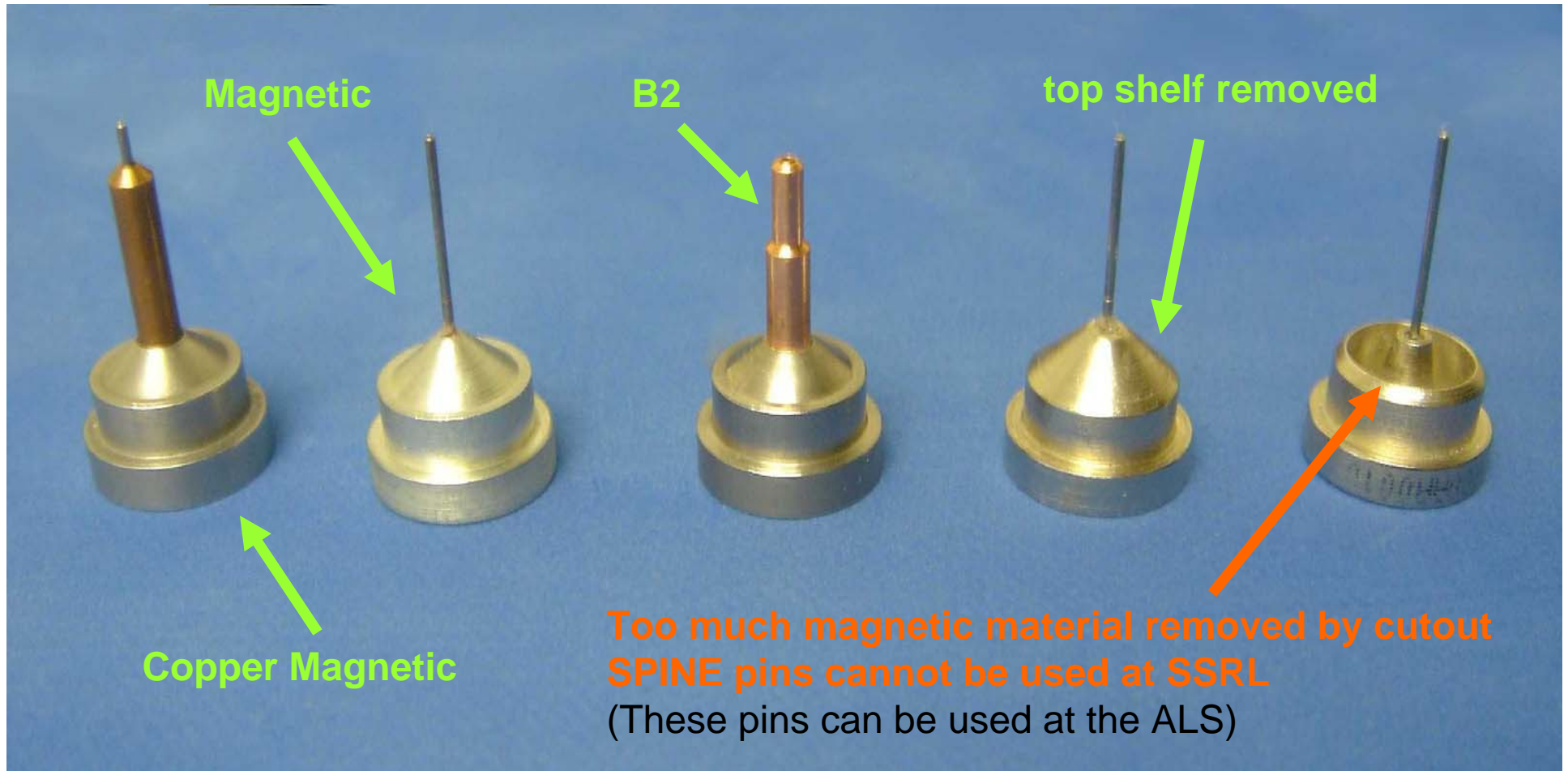
Which sample pins are compatible?

Hampton

Mitegen

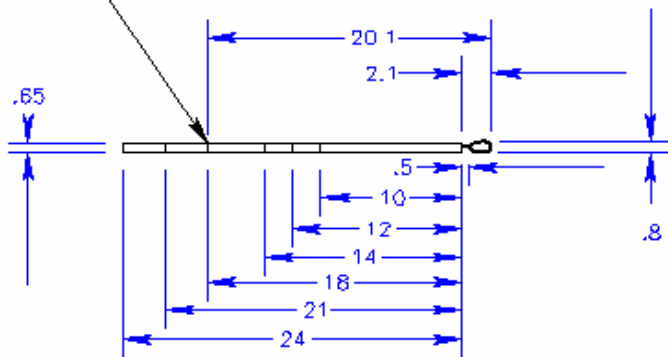
ALS

~~SPINE~~

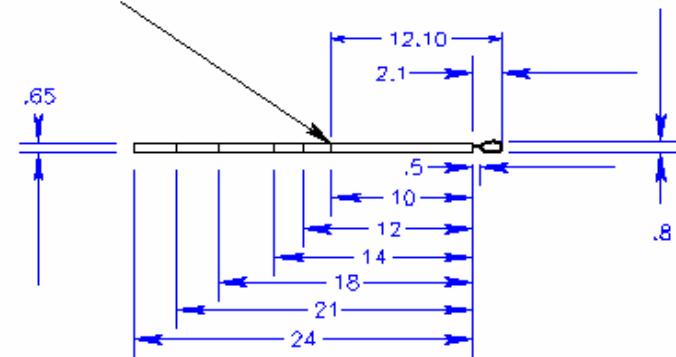


What length pin should I use?

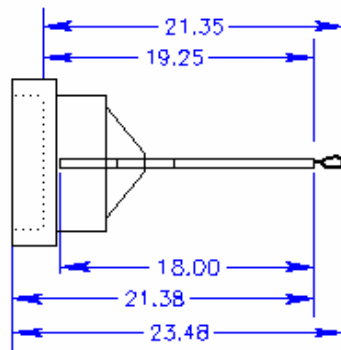
Hampton Mounted CryoLoop in a MicroTube
Break Here (Largest CryoLoop shown)



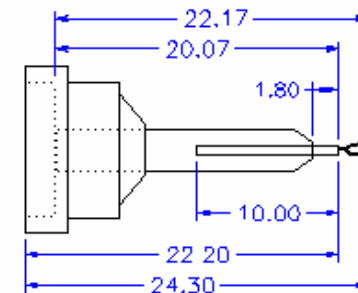
Hampton Mounted CryoLoop in a MicroTube
Break Here (Largest CryoLoop shown)



Hampton CrystalCap Magnetic



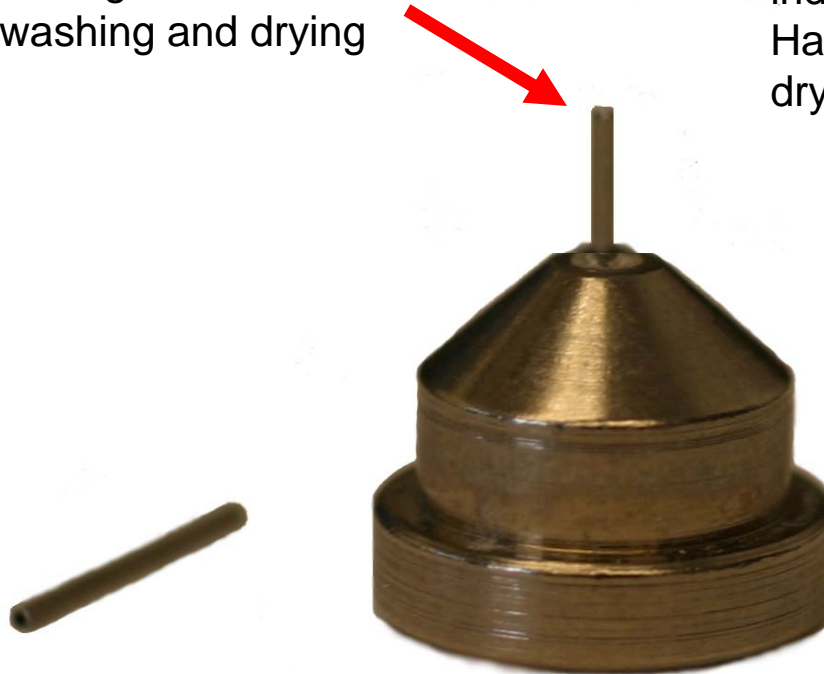
Hampton 18mm CrystalCap Copper Magnetic



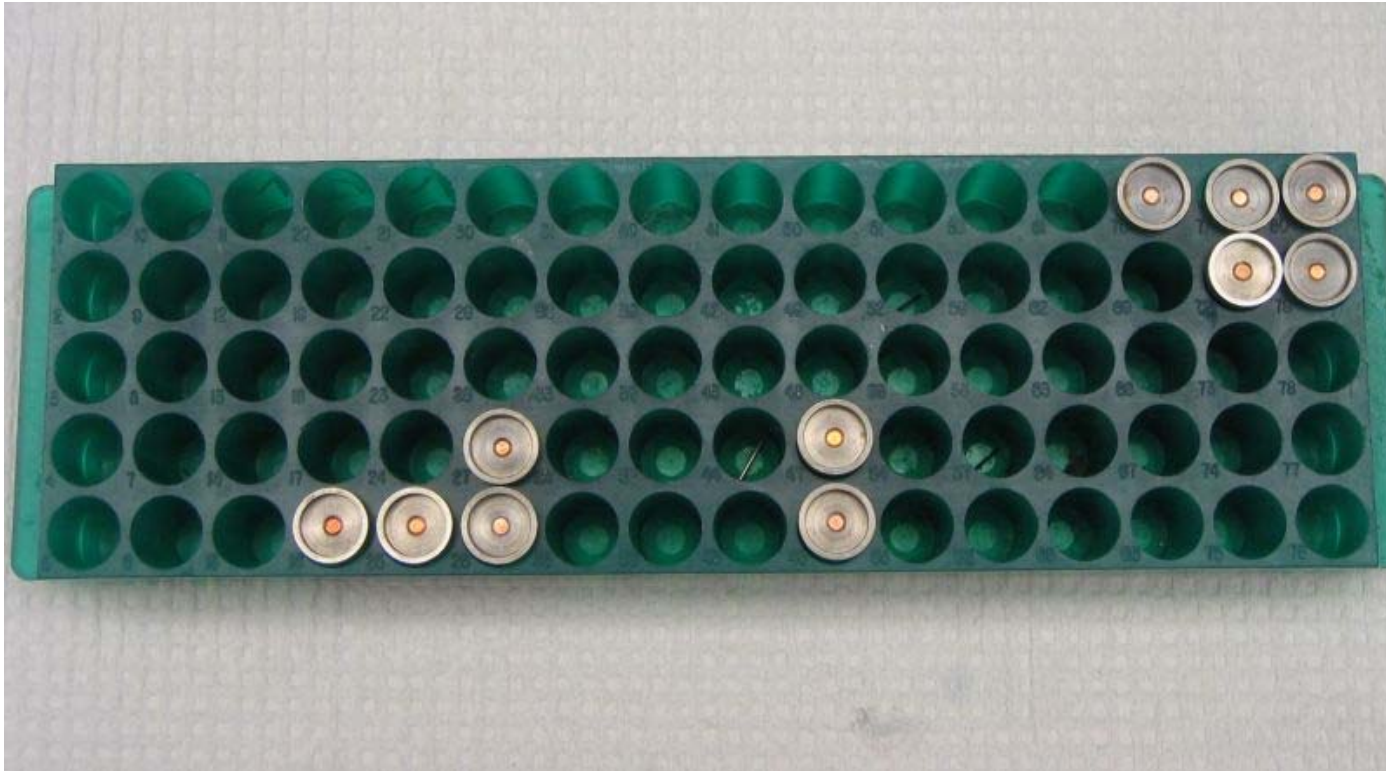
Broken or Lost Micro-tubes

Broken micro-tubes are usually a result of mishandling sample pins in preparation for reuse. In particular pins should not be piled together in container when washing and drying them.

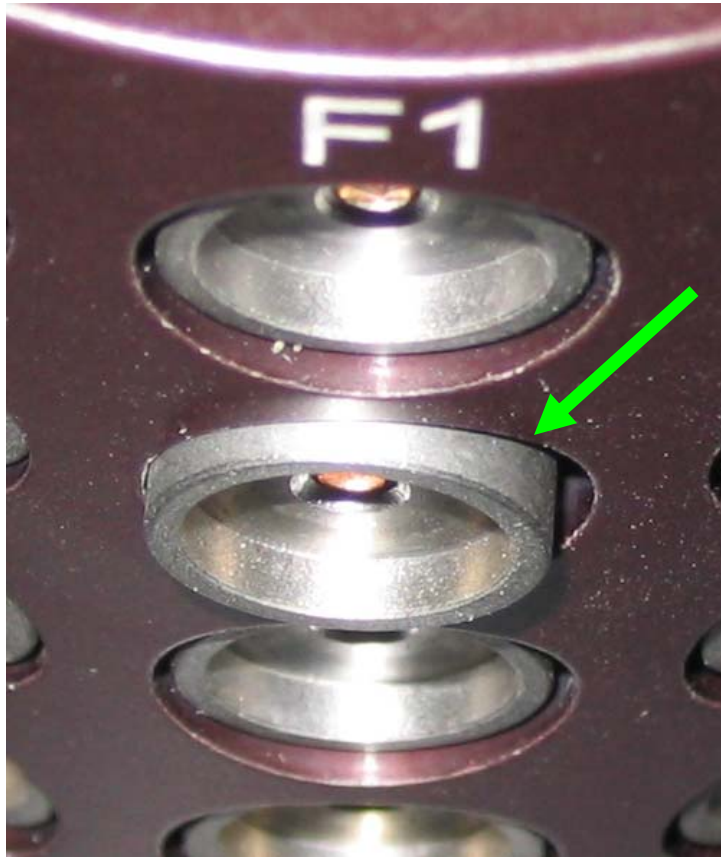
To wash pins, place them individually on magnetic tray. Hang the tray upside down to dry the pins.



Store Pins in a Safe Place



Broken or Lost Micro-tubes



Avoid Lost Micro-tubes

lost micro-tube



Which Glue is Best?



Super Glue



Super Glue Gel



Duco Cement



5-minute Epoxy



24-hour Epoxy

Glue Test 1

19 pins with glued micro-tubes were loaded into a cassette

6 cycles of the following steps were performed:

- Mount/dismount under liquid nitrogen using SAM
- Remove cassette / warm to room temperature
- Repeat

Remove Pins / Check for Failures:

No Failures

Glue Test 2

After shaking pins in a tub of water to simulate washing:

Glue

5-min Epoxy

24-hour Epoxy

Super Glue Gel

Duco Cement

Super Glue

Failures

0/19

0/19

1/19

5/19 (~26%)

7/19 (~37%)

Failures for Super Glue

Only Use Epoxy!



Super Glue



Super Glue Gel



Duco Cement



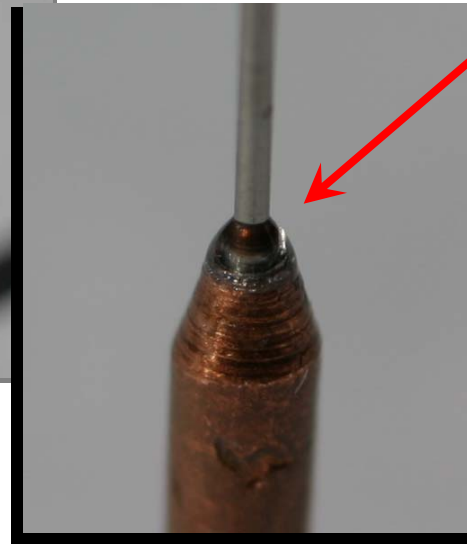
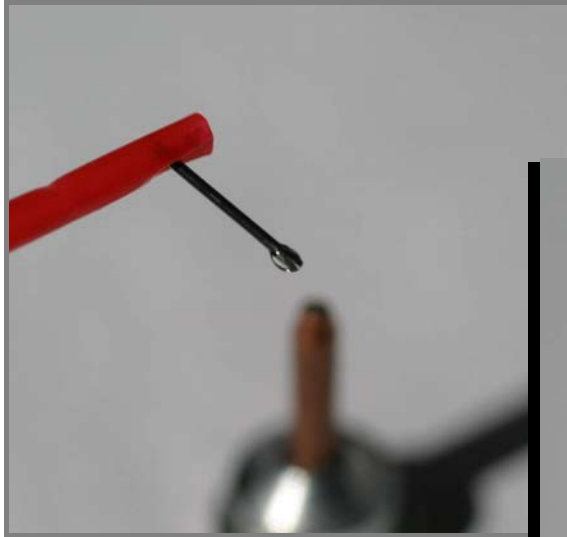
5-minute Epoxy



24-hour Epoxy

How much epoxy should I use?

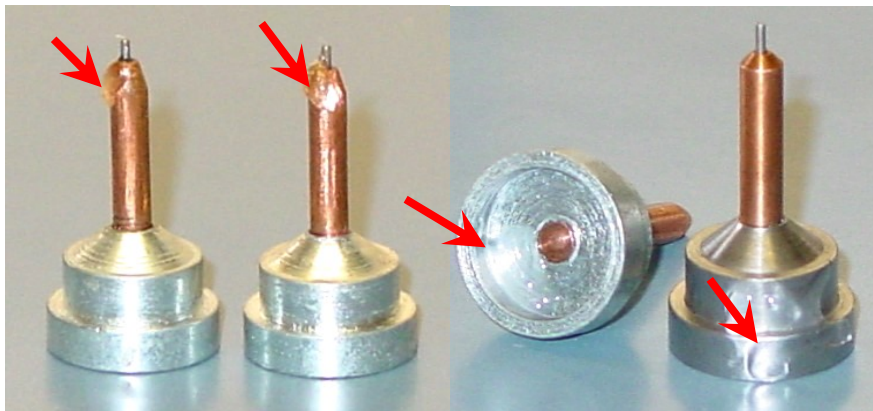
Only use epoxy



Aim for an even seal without a lot of excess epoxy

Inspect your sample pins

Watch-out for excess glue or grease spilled on pins

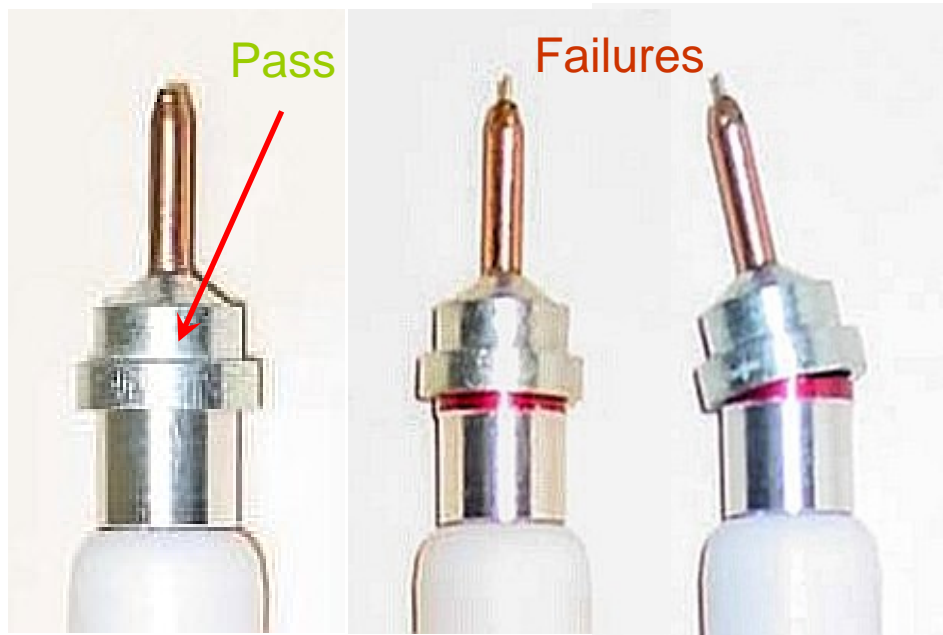
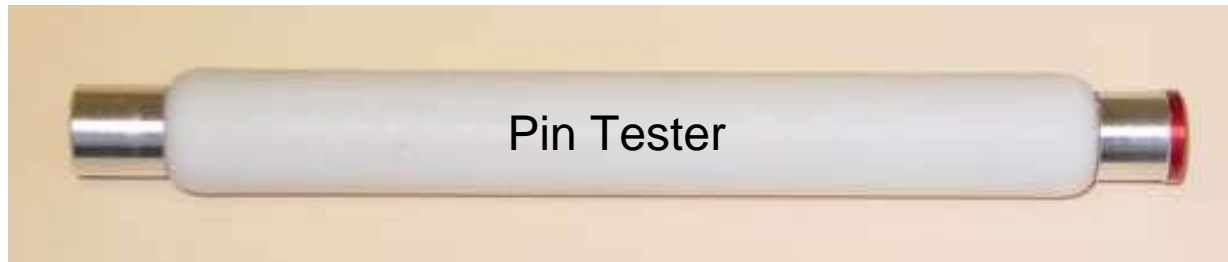


Do not use pins with the wrong form-factor



Look for corrosion

Test your sample pins

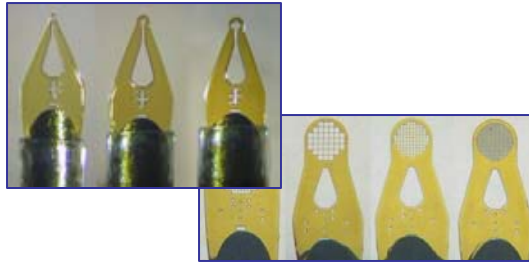


Where do I get sample pins?

Buy compatible sample pins and mounts online:

1. www.hamptonresearch.com
2. www.mitegen.com
3. www.crystalpositioningsystems.com

**M1-L11-A1
MicroMounts**
Small Aperture Assortment
5 each of 10, 20, 30 and
50 micrometer crystal
apertures
11 mm pin length
Price: \$ 60.00
Quantity: [Update Cart](#)



**M1-L11-A2
MicroMounts**
Medium Aperture
Assortment
5 each of 75, 100, 150 and
200 micrometer crystal
apertures
11 mm pin length
Price: \$ 60.00
Quantity: [Update Cart](#)



Ordering Information:
HR4-900 CrystalCap Copper
Magnetic - 18 mm
Without Vial
30 pack
Buy HR4-900 Now: \$94.50
Quantity: [ORDER NOW](#)

M1-L11-A3