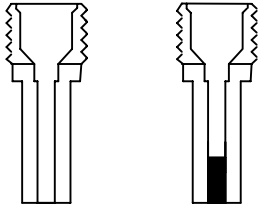
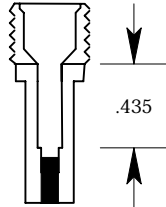


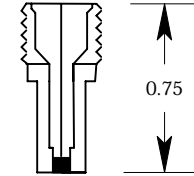
# Pressure Cell RT



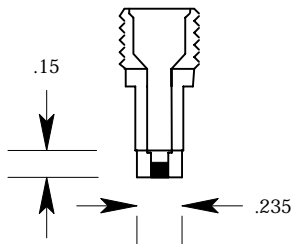
PLUG BOTTOMHOLE WITH  
STAINLESS STEEL



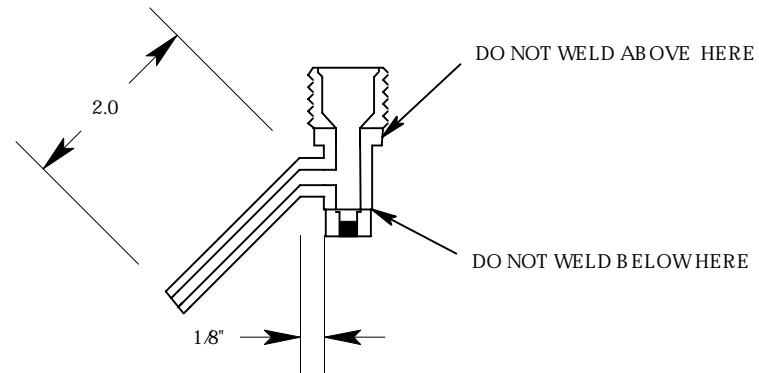
MODIFY INSIDE DIAMETER OF  
HOLE TO .125 AND .435 DEEP



GRIND AWAY BOTTOM UNTIL THE  
TOTAL LENGTH IS 0.75



MODIFY BOTTOM OUTSIDE  
DIAMETER TO .235 AT 0.60 FROM  
THE TOP



DRILL HOLE IN SIDE AND WELD 1/  
8" SS TUBING TO THE SIDE.  
TUBING SHOULD HAVE A 45  
DEGREE BEND AT 1.8 FROM THE  
SIDE. THE TUBE LENGTH SHOULD  
BE 2 INCHES AFTER THE BEND

TOL:

.XX = +/- .010  
.XXX = +/- .005

Notes: Start with Swagelok 1/8" cajun adaptor part #  
SS-2-UT-A-4