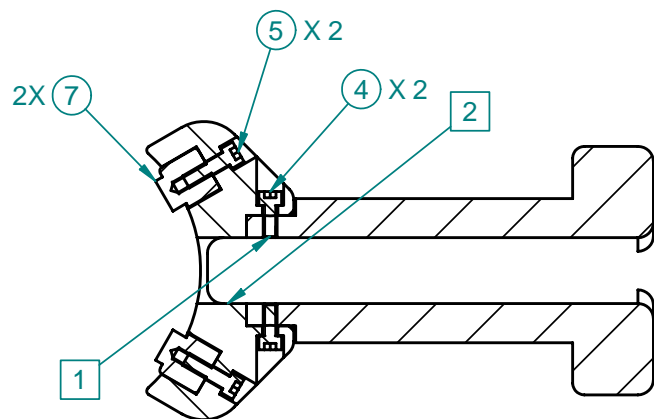


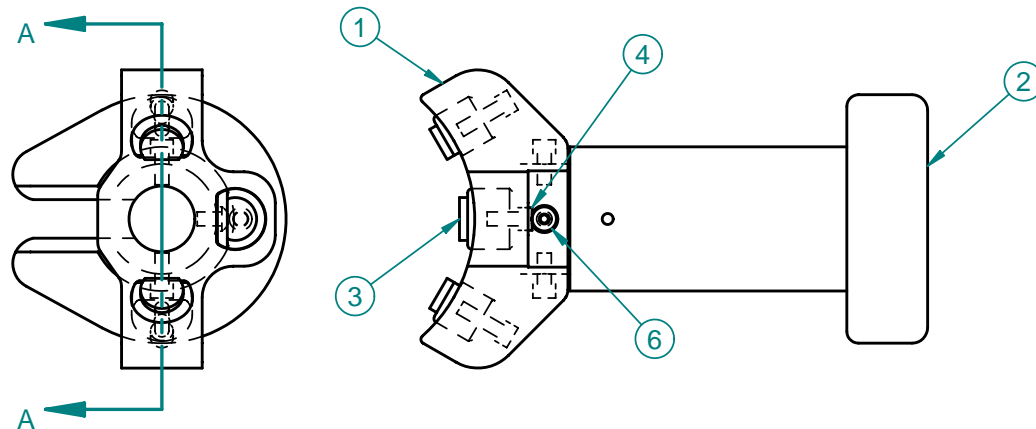
PROPRIETARY DATA OF STANFORD UNIVERSITY AND/OR U.S. DEPARTMENT OF ENERGY
 RECIPIENT SHALL NOT PUBLISH THE WITHIN INFORMATION WITHOUT SPECIFIC
 PERMISSION OF STANFORD UNIVERSITY

NOTE:

- 1** SCREWS SHOULD NOT PROTRUDE INTO INTERIOR.
- 2** CHECK FOR ALIGNMENT. TWO SURFACES SHOULD BE FLUSH.



SECTION A-A



REV	DESCRIPTION	DWN	CHKR	APVD	DATE
B	0				---

7		LOADING ALIGNMENT TOOL, BASE SIDE LEG	2
6		SCREW, BUTTON HEAD, SCH, HEX, #4-40 UNC-2A X .188, SST	1
5		SCREW, CAP, SCH, HEX, #4-40 UNC-2A X .375, SST	2
4		SCREW, CAP, SCH, HEX, #4-40 UNC-2A X .250, SST	3
3		LOADING ALIGNMENT TOOL, BASE LEG	1
2		LOADING ALIGNMENT TOOL, HANDLE	1
1		LOADING ALIGNMENT TOOL, BASE	1
ITEM	STOCK OR PART NO	TITLE OR DESCRIPTION	QTY

---	SCALE: 1:1	DO NOT SCALE DRAWING	CAD FILE NAME: loading alignment guide.dft	
---	DIMENSIONING AND TOLERANCING IS IN ACCORDANCE WITH ASME Y14.5M-1994.	STANFORD SYNCHROTRON RADIATION LABORATORY U.S. DEPARTMENT OF ENERGY	LOADING ALIGNMENT TOOL GUIDE TOOL ASSEMBLY	
---	UNLESS OTHERWISE SPECIFIED DIMENSIONS ARE IN INCHES. TOLERANCES: BREAK EDGES .005-.015 INTERNAL CORNERS R.015 MAX	SLAC, STANFORD UNIVERSITY STANFORD, CALIFORNIA		
---	FRACTIONS ± --- DEC .XX ± .01 .XXX ± .005 .XXXX ± --- ANGLE ± ---	ENGR SSRL-SMB-PX PROTOTYPE GROUP DWN _____ 3/07/06 CHKR _____	---	---
NEXT ASSEMBLIES:	ALL SURF 125/√	APPROVALS --- ---	DRAWING NUMBER ---	REVISION NUMBER 0

1 OF 1

REV	DESCRIPTION	DWN	CHKR	APVD	DATE

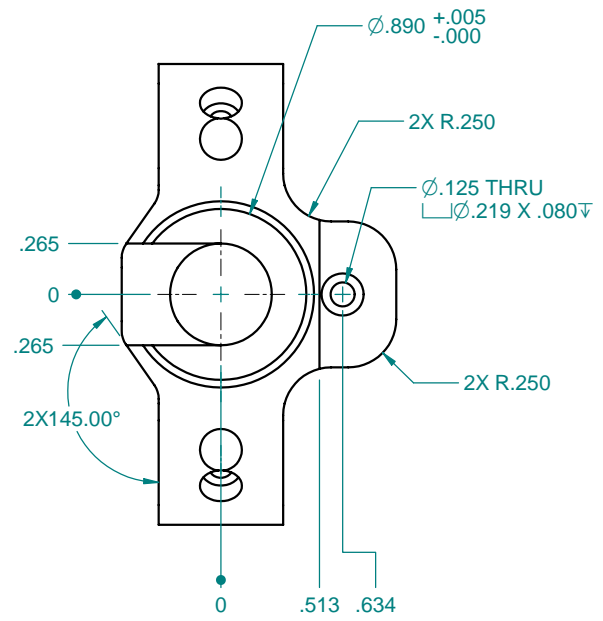
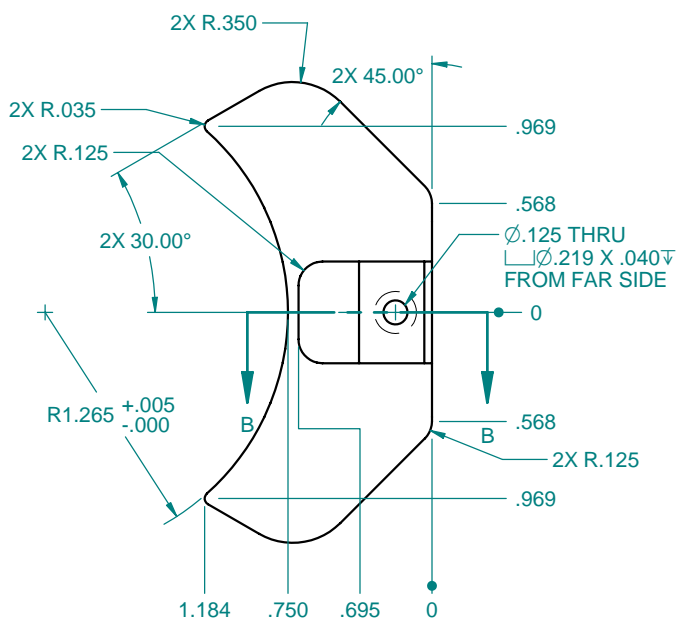
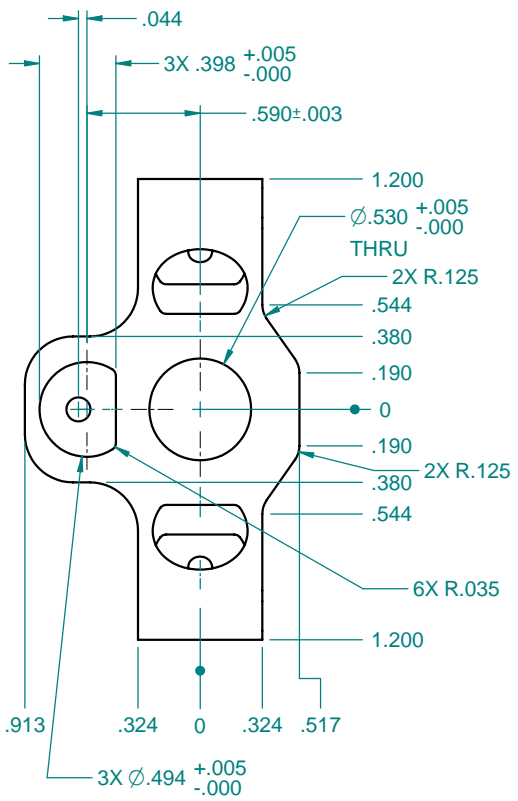
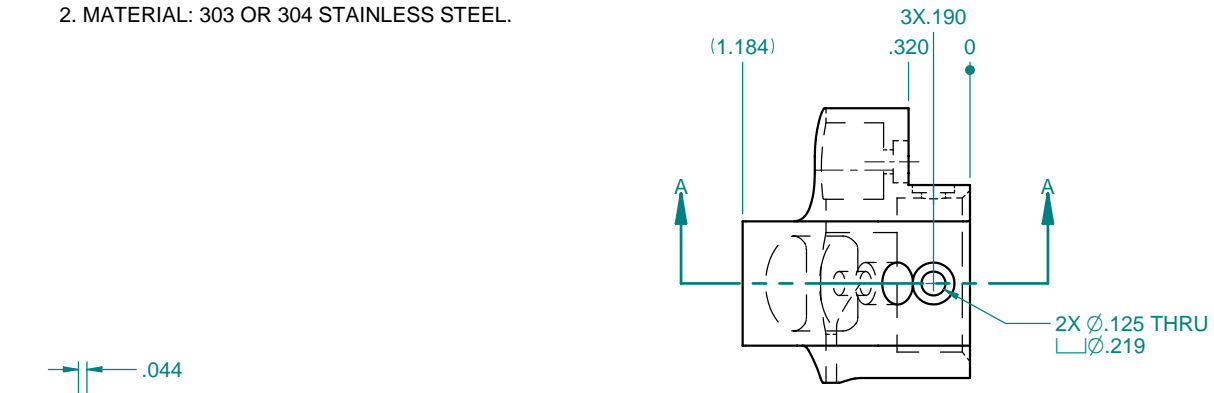
NOTE:
 1. SOME HIDDEN LINES LEFT OUT FOR CLARITY.
 2. MATERIAL: 303 OR 304 STAINLESS STEEL.

D

C

B

A



---	DIMENSIONING AND TOLERANCING IS IN ACCORDANCE WITH ASME Y14.5M-1994.	SCALE: 2:1	DO NOT SCALE DRAWING	CAD FILE NAME: loading alignment tool-base-c.dft	
---	UNLESS OTHERWISE SPECIFIED DIMENSIONS ARE IN INCHES. TOLERANCES: BREAK EDGES .005-.015 INTERNAL CORNERS R.015 MAX FRACTIONS ± --- DEC .xx ± .01 .xxx ± .005 .xxxx ± --- ANGLE ± .25 ALL SURF	STANFORD SYNCHROTRON RADIATION LABORATORY U.S. DEPARTMENT OF ENERGY SLAC, STANFORD UNIVERSITY STANFORD, CALIFORNIA		LOADING ALIGNMENT TOOL BASE P 1 OF 2	
---	PROPRIETARY DATA OF STANFORD UNIVERSITY AND/OR U. S. DEPARTMENT OF ENERGY. RECIPIENT SHALL NOT PUBLISH THE INFORMATION WITHIN UNLESS GRANTED SPECIFIC PERMISSION OF STANFORD UNIVERSITY.	ENGR SSRL-SMB-PX PROTOTYPE DATE 3/7/06 APPROVALS			
---	NEXT ASSEMBLIES:	DWN GROUP	CHKR	DRAWING NUMBER ---	REVISION NUMBER 0

SH 1 OF 2

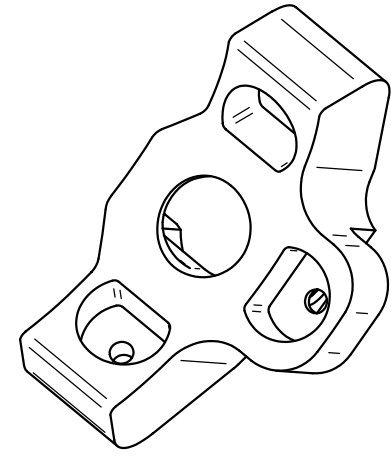
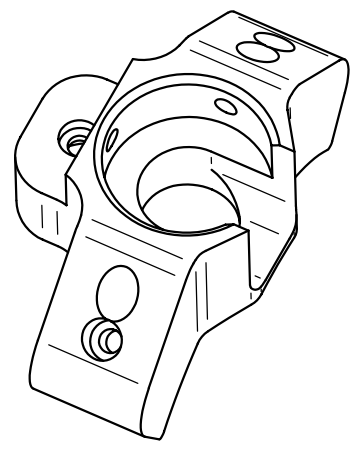
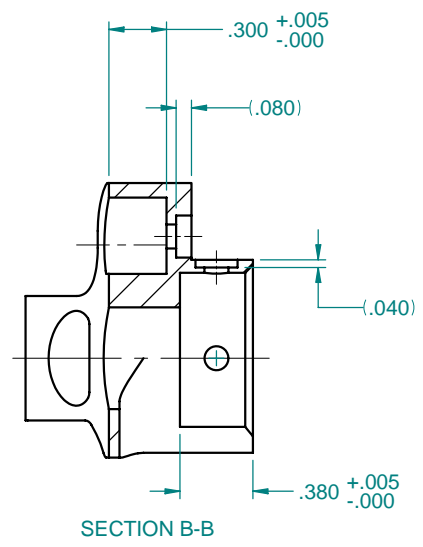
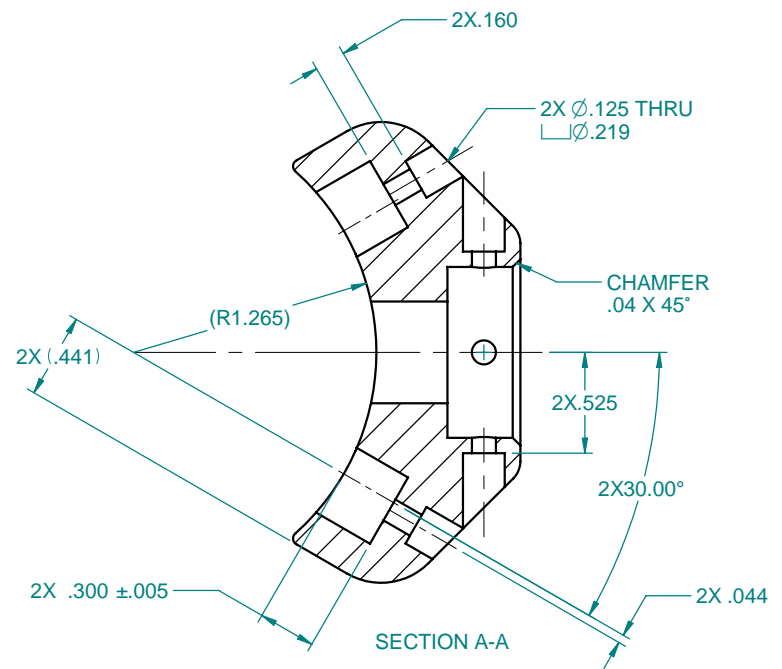
REV	DESCRIPTION	DWN	CHKR	APVD	DATE
-----	-------------	-----	------	------	------

D

C

B

A



---	DIMENSIONING AND TOLERANCING IS IN ACCORDANCE WITH ASME Y14.5M-1994.	SCALE: 2:1	DO NOT SCALE DRAWING	CAD FILE NAME: loading alignment tool-base-c.dft	
---	UNLESS OTHERWISE SPECIFIED DIMENSIONS ARE IN INCHES.	STANFORD SYNCHROTRON RADIATION LABORATORY U.S. DEPARTMENT OF ENERGY		LOADING ALIGNMENT TOOL BASE (DETAIL) P 2 OF 2	
---	TOLERANCES: BREAK EDGES .005-.015 INTERNAL CORNERS R.015 MAX	SLAC, STANFORD UNIVERSITY STANFORD, CALIFORNIA			
---	FRACTIONS ± ---	PROPRIETARY DATA OF STANFORD UNIVERSITY AND/OR U. S. DEPARTMENT OF ENERGY. RECIPIENT SHALL NOT PUBLISH THE INFORMATION WITHIN UNLESS GRANTED SPECIFIC PERMISSION OF STANFORD UNIVERSITY.		---	
---	DEC .xx ± .01	ENGR SSRL-SMB-PXPROTOTYPE DATE		APPROVALS	
---	.xxx ± .005	DWN GROUP 3/7/06		---	
---	.xxx ± ---	CHKR ---		DRAWING NUMBER	
---	ANGLE ± .25 ALL SURF ✓			REVISION NUMBER	
NEXT ASSEMBLIES:				0 C	

C

0

...

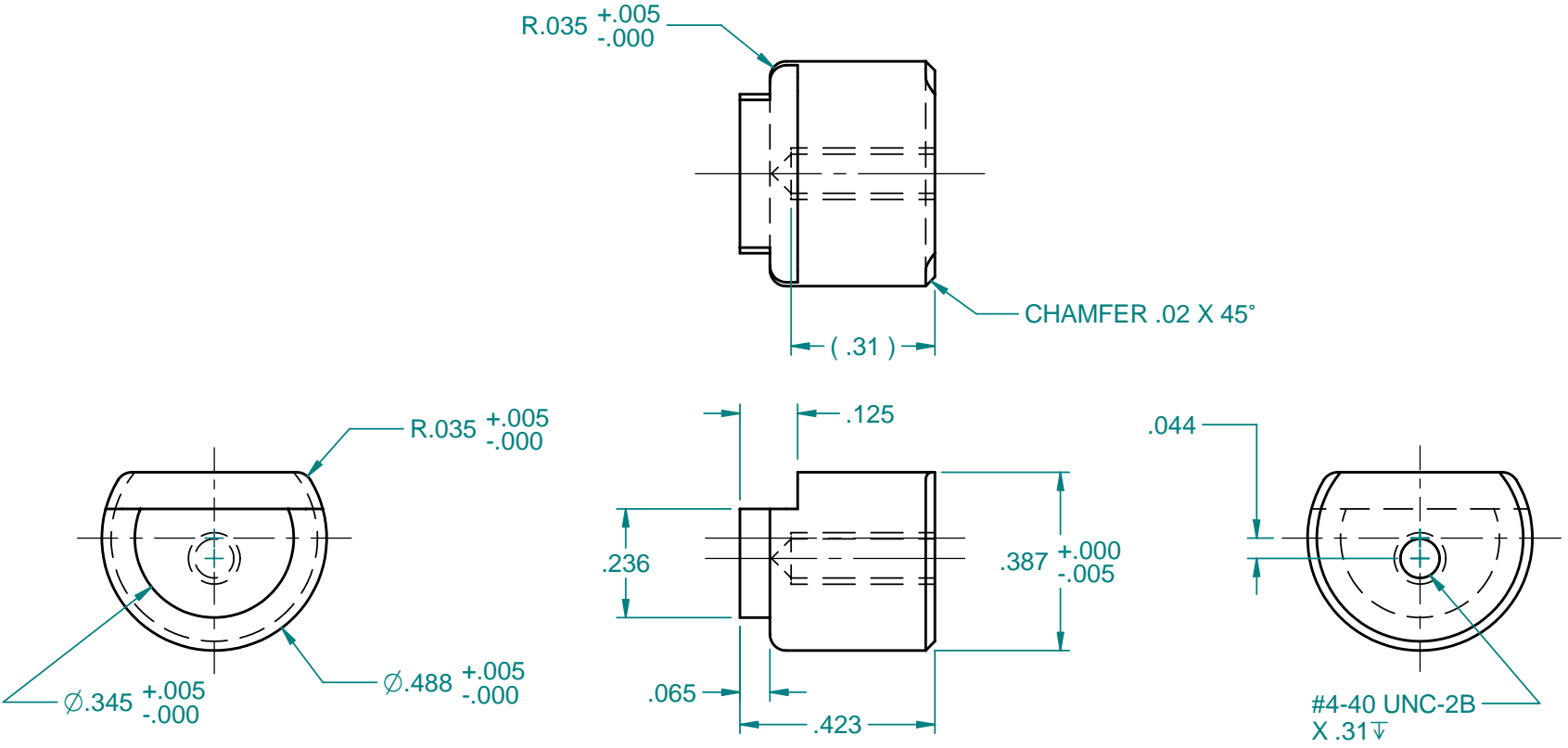
SH 2 OF 2

PROPRIETARY DATA OF STANFORD UNIVERSITY AND/OR U.S. DEPARTMENT OF ENERGY
 RECIPIENT SHALL NOT PUBLISH THE WITHIN INFORMATION WITHOUT SPECIFIC
 PERMISSION OF STANFORD UNIVERSITY

B 0 ---

REV	DESCRIPTION	DWN	CHKR	APVD	DATE
-----	-------------	-----	------	------	------

MATERIAL: ALUMINUM 6061-T6



---	SCALE: 4:1	DO NOT SCALE DRAWING	CAD FILE NAME:		
---	DIMENSIONING AND TOLERANCING IS IN ACCORDANCE WITH ASME Y14.5M-1994.	STANFORD SYNCHROTRON RADIATION LABORATORY U.S. DEPARTMENT OF ENERGY	LOADING ALIGNMENT TOOL		
---	UNLESS OTHERWISE SPECIFIED DIMENSIONS ARE IN INCHES. TOLERANCES: BREAK EDGES .005-.015 INTERNAL CORNERS R.015 MAX	SLAC, STANFORD UNIVERSITY STANFORD, CALIFORNIA	BASE LEG		
---	FRACTIONS ± --- DEC .XX ± .01 .XXX ± .005 .XXXX ± --- ANGLE ± ---	ENGR SSRL-SMB-PX PROTOTYPE GROUP DWN _____ 9/16/05 CHKR _____	---	---	---
NEXT ASSEMBLIES:	ALL SURF $\sqrt{125}$	APPROVALS --- ---	DRAWING NUMBER ---	REVISION NUMBER 0	B

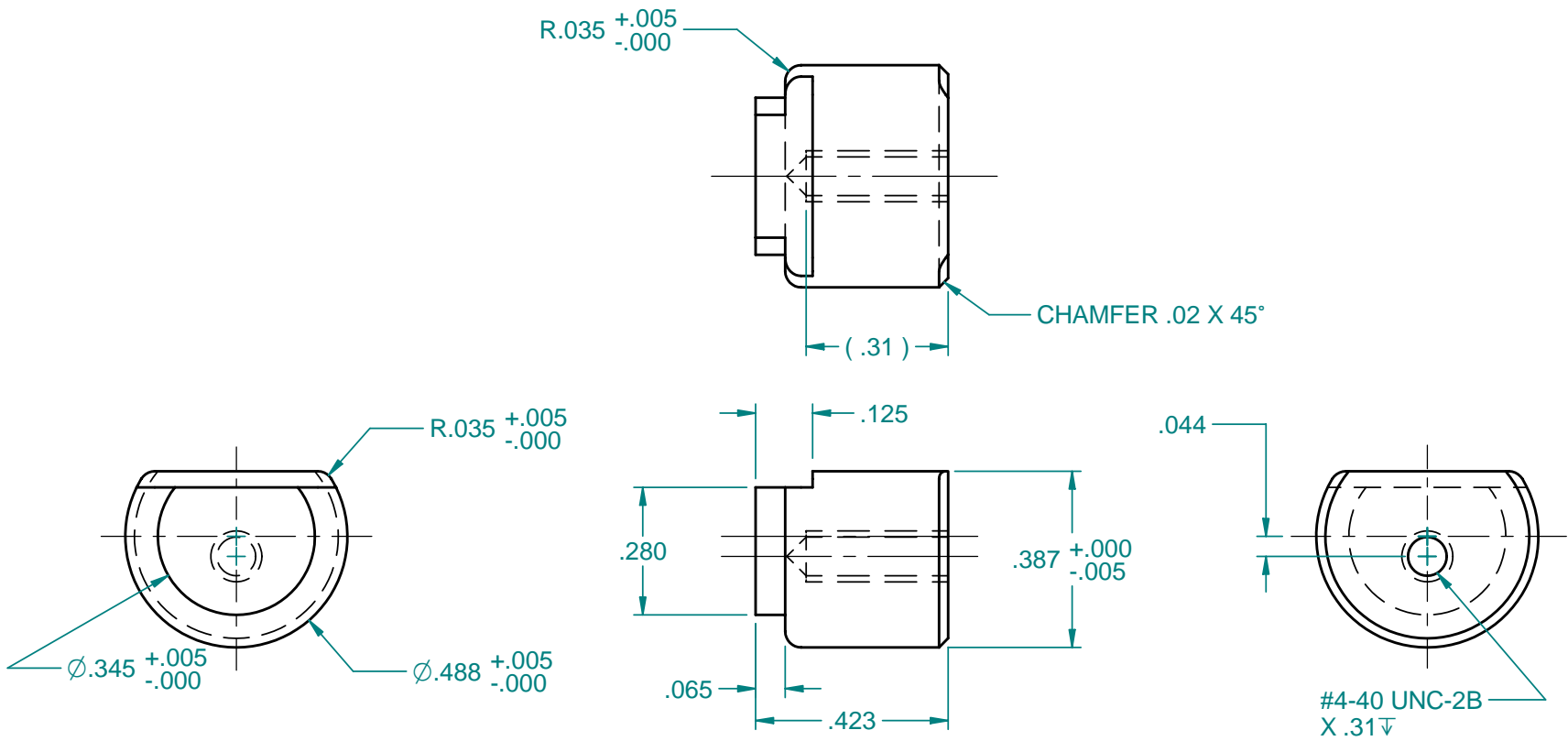
1 OF 1 SHEET

PROPRIETARY DATA OF STANFORD UNIVERSITY AND/OR U.S. DEPARTMENT OF ENERGY
 RECIPIENT SHALL NOT PUBLISH THE WITHIN INFORMATION WITHOUT SPECIFIC
 PERMISSION OF STANFORD UNIVERSITY

B 0 ---

REV	DESCRIPTION	DWN	CHKR	APVD	DATE
-----	-------------	-----	------	------	------

MATERIAL: ALUMINUM 6061-T6



---	SCALE: 4:1	DO NOT SCALE DRAWING	CAD FILE NAME: loading alignment tool-base side legs.dft
---	DIMENSIONING AND TOLERANCING IS IN ACCORDANCE WITH ASME Y14.5M-1994.	STANFORD SYNCHROTRON RADIATION LABORATORY U.S. DEPARTMENT OF ENERGY	LOADING ALIGNMENT TOOL BASE SIDE LEG
---	UNLESS OTHERWISE SPECIFIED DIMENSIONS ARE IN INCHES. TOLERANCES: BREAK EDGES .005-.015 INTERNAL CORNERS R.015 MAX	SLAC, STANFORD UNIVERSITY STANFORD, CALIFORNIA	
---	FRACTIONS ± --- DEC .XX ± .01 .XXX ± .005 .XXXX ± --- ANGLE ± ---	ENGR SSRL-SMB-PX PROTOTYPE GROUP DWN _____ 2/16/05 CHKR ---	---
NEXT ASSEMBLIES:	ALL SURF $\sqrt{125}$	APPROVALS --- ---	DRAWING NUMBER ---
			REVISION NUMBER 0
			B

1 OF 1